

# Woods Hole 2016 - brief primer on Multiple Sequence Alignment presented by Mark Holder

---

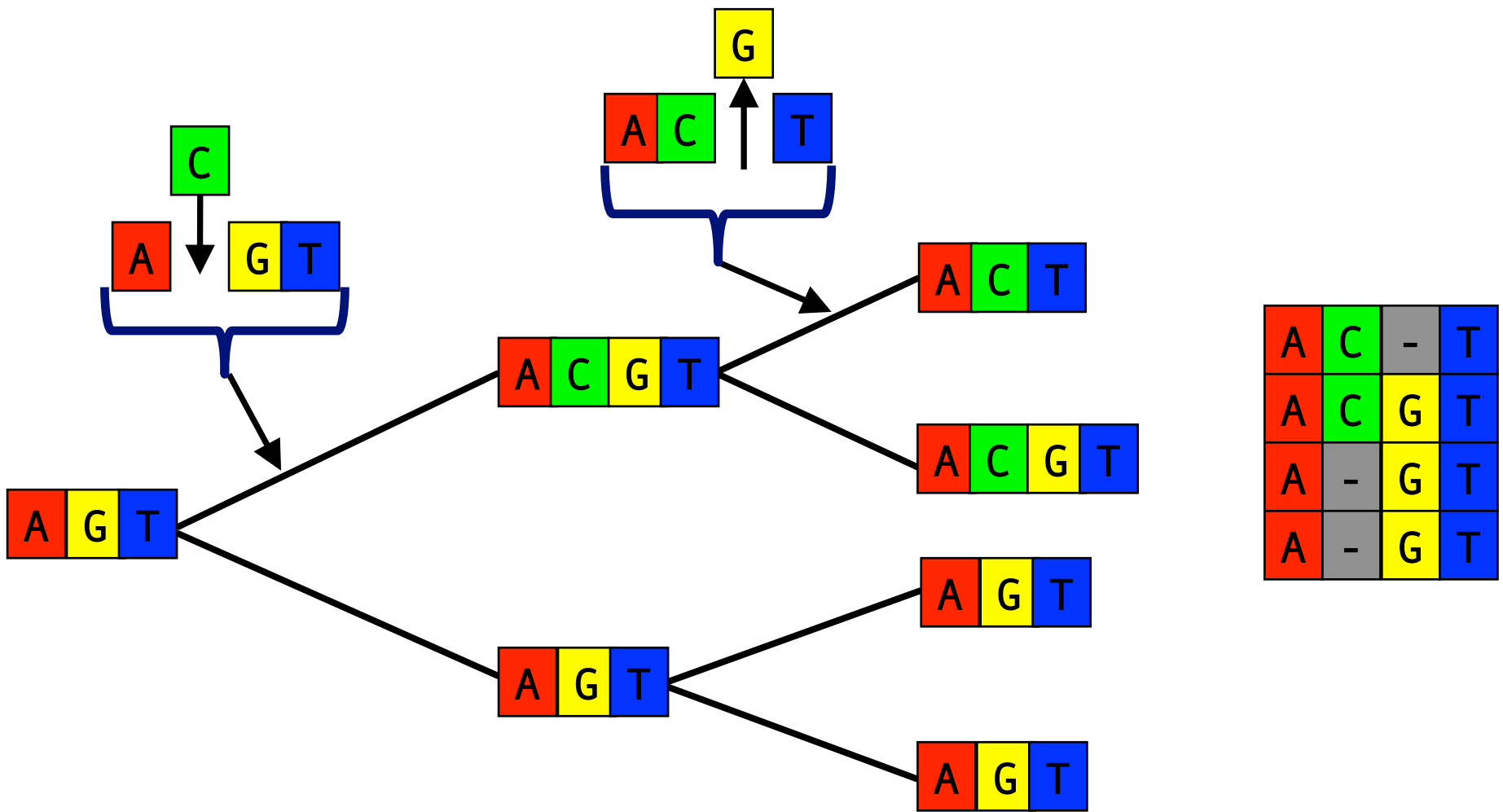
Many forms of sequence alignment are used in bioinformatics:

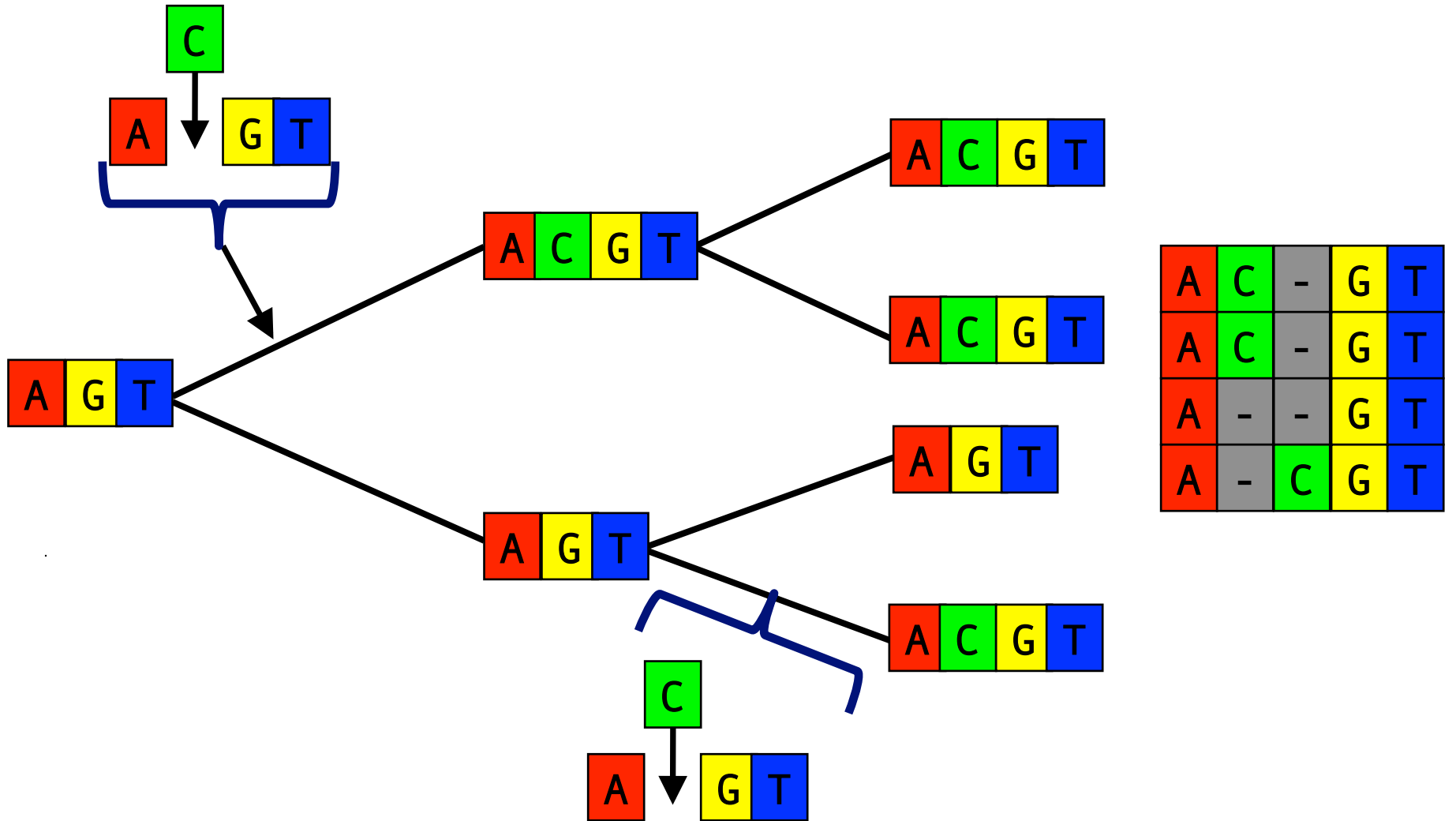
- Structural Alignment
- Local alignments
- **Global, evolutionary alignment**
  - Inputs: unaligned sequences thought to be homologous over their full length
  - we often ignore events like transpositions or inversions

A recent review: Chatzou et al. (2015)

## Multiple Sequence Alignment (MSA) - main points

- The goal of MSA is to introduce gaps such that residues in the same column are homologous (all residues in the column descended from a residue in their common ancestor).





## Expressing homology detection as a bioinformatics challenge

---

- The problem is recast as:
  - reward matches (+ scores)
  - penalize rare substitutions (– scores),
  - penalize gaps (– scores),
  - try to find an alignment that maximizes the total score

- Pairwise alignment is tractable
- Most MSA programs use progressive alignment:
  - this reduces MSA to a series of pairwise operations.
  - these algorithms are heuristic. They are not guaranteed to return the optimal solution.
  - the criteria used are not ideal from an evolutionary standpoint (and this has implications for tree inference).

- Simultaneous inference of MSA and tree is the most appropriate choice (see Hossain et al., 2015), but is computationally demanding. See: Poisson Indel Process (Bouchard-Côté and Jordan, 2013), Bali-Phy, Handel, AliFritz, and POY software
- Many people filter the automatically generated alignments: GUIDANCE2 (and similar tools) cull ambiguously aligned regions to lower the chance that misalignment leads to errors in downstream analyses.

human KRSV  
 chimp KR-V  
 gorilla KS-V  
 orang KPRV

How we align these sequences affects tree estimation.

human	KRSV		human	KRSV		human	KRSV
chimp	KR-V		chimp	K-RV		chimp	KR-V
gorilla	KS-V		gorilla	K-SV		gorilla	K-SV
orang	KPRV		orang	KPRV		orang	KPRV

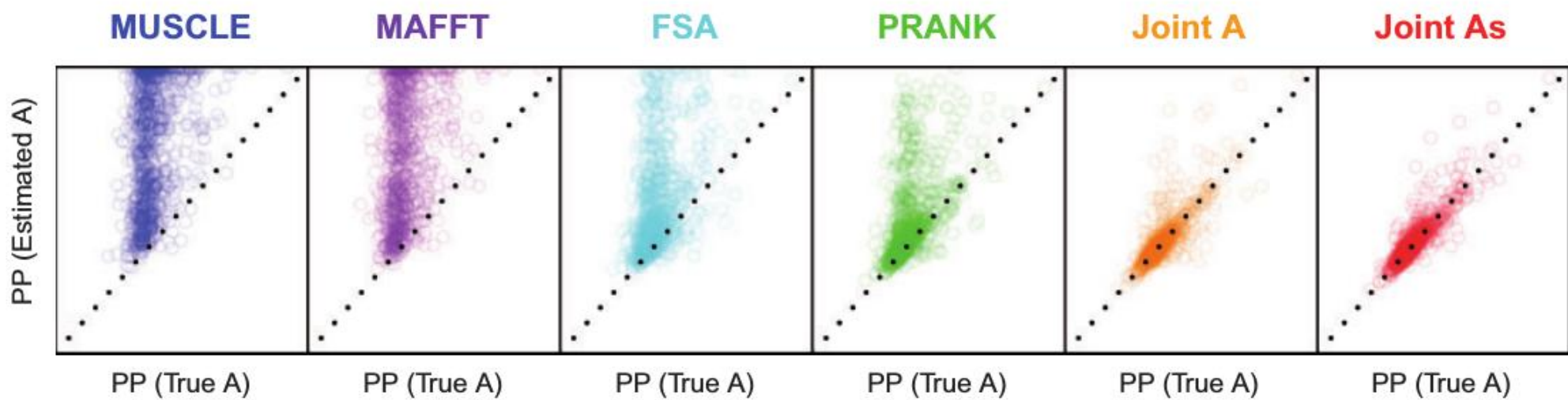


How we align affects estimation of tests about processes of molecular evolution.

Redelings (2014) studied jointly estimating alignments and  $\omega$ .

$\omega$  is the ratio of a non-synonymous substitution type to a synonymous substitution type (see Joe Bielawski's lecture).

A model with  $\omega > 1$  allows for positive, diversifying selection.



## Pairwise alignment

---

Gap penalties and a substitution matrix imply a score for any alignment. Pairwise alignment involves finding the alignment that maximizes this score.

- substitution matrices assign positive values to matches or substitutions between similar residues (for example Leucine→Isoleucine).
- infrequent types of substitutions receive negative scores
- indels are rare, so gaps are heavily penalized (negative scores).

# BLOSUM 62 Substitution matrix

---

	A	R	N	D	C	Q	E	G	H	I	L	K	M	F	P	S	T	W	Y	V
A	4																			
R	-1	5																		
N	-2	0	6																	
D	-2	-2	1	6																
C	0	-3	-3	-3	9															
Q	-1	1	0	0	-3	5														
E	-1	0	0	2	-4	2	5													
G	0	-2	0	-1	-3	-2	-2	6												
H	-2	0	1	-1	-3	0	0	-2	8											
I	-1	-3	-3	-3	-1	-3	-3	-4	-3	4										
L	-1	-2	-3	-4	-1	-2	-3	-4	-3	2	4									
K	-1	2	0	-1	-3	1	1	-2	-1	-3	-2	5								
M	-1	-1	-2	-3	-1	0	-2	-3	-2	1	2	-1	5							
F	-2	-3	-3	-3	-2	-3	-3	-3	-1	0	0	-3	0	6						
P	-1	-2	-2	-1	-3	-1	-1	-2	-2	-3	-3	-1	-2	-4	7					
S	1	-1	1	0	-1	0	0	0	-1	-2	-2	0	-1	-2	-1	4				
T	0	-1	0	-1	-1	-1	-1	-2	-2	-1	-1	-1	-1	-2	-1	1	5			
W	-3	-3	-4	-4	-2	-2	-3	-2	-2	-3	-2	-3	-1	1	-4	-3	-2	11		
Y	-2	-2	-2	-3	-2	-1	-2	-3	2	-1	-1	-2	-1	3	-3	-2	-2	2	7	
V	0	-3	-3	-3	-1	-2	-2	-3	-3	3	1	-2	1	-1	-2	-2	0	-3	-1	4
	A	R	N	D	C	Q	E	G	H	I	L	K	M	F	P	S	T	W	Y	V

## Scoring an alignment with the BLOSUM 62 matrix

---

<i>Pongo</i>	V	D	E	V	G	G	E	L	G	R	L	F	V	V	P	T	Q
<i>Gorilla</i>	V	E	V	A	G	D	L	G	R	L	L	I	V	Y	P	S	R
<b>Score</b>	4	2	-2	0	6	-6	-3	-4	-2	-2	4	0	4	-1	7	4	1

The score for the alignment is

$$D_{ij} = \sum_k d_{ij}^{(k)}$$

If  $i$  indicates *Pongo* and  $j$  indicates *Gorilla*. ( $k$ ) is just an index for the column.

$$D_{ij} = 12$$

## Scoring an alignment with gaps

---

If we were to use a gap penalty of -8:

<i>Pongo</i>	V	D	E	V	G	G	E	L	G	R	L	-	F	V	V	P	T	Q
<i>Gorilla</i>	V	-	E	V	A	G	D	L	G	R	L	L	I	V	Y	P	S	R
<b>Score</b>	4	-8	5	5	0	6	2	4	6	5	4	-8	0	4	-1	7	4	1

By introducing gaps we have improved the score:

$$D_{ij} = 40$$

## Gap Penalties

---

Penalizing gaps more heavily than substitutions avoids alignments like this:

<i>Pongo</i>	VDEVGGE-LGRLFVVPTQ
<i>Gorilla</i>	VDEVGG-DLGRLFVVPTQ

*Affine gap penalties* are often used to accommodate multi-site indels:

$$GP = GO + (l)GE$$

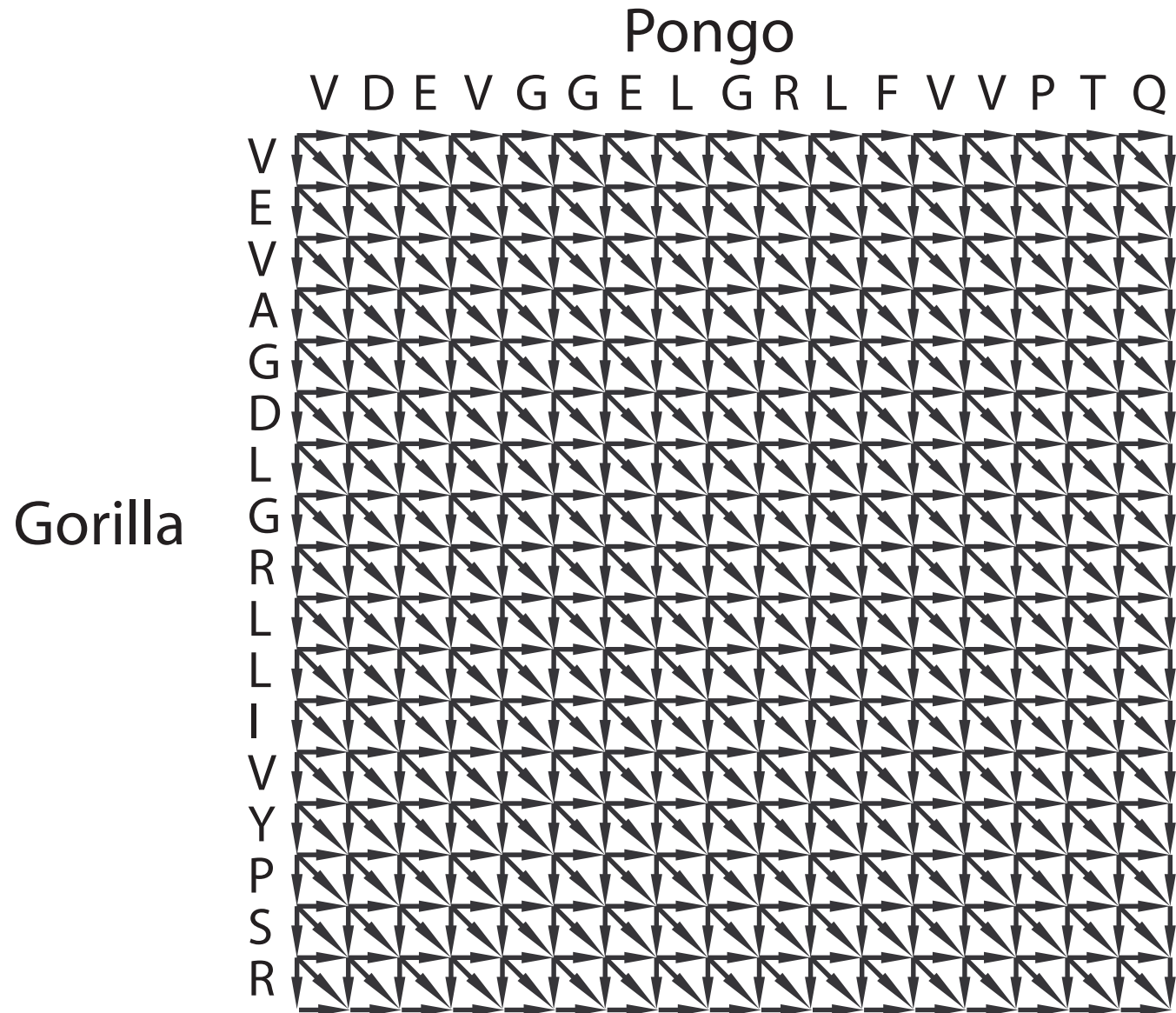
where:

- GP is the gap penalty.
- GO is the “gap-opening penalty”
- GE is the “gap-extension penalty”
- $l$  is the length of the gap



# Finding an optimal alignment

---

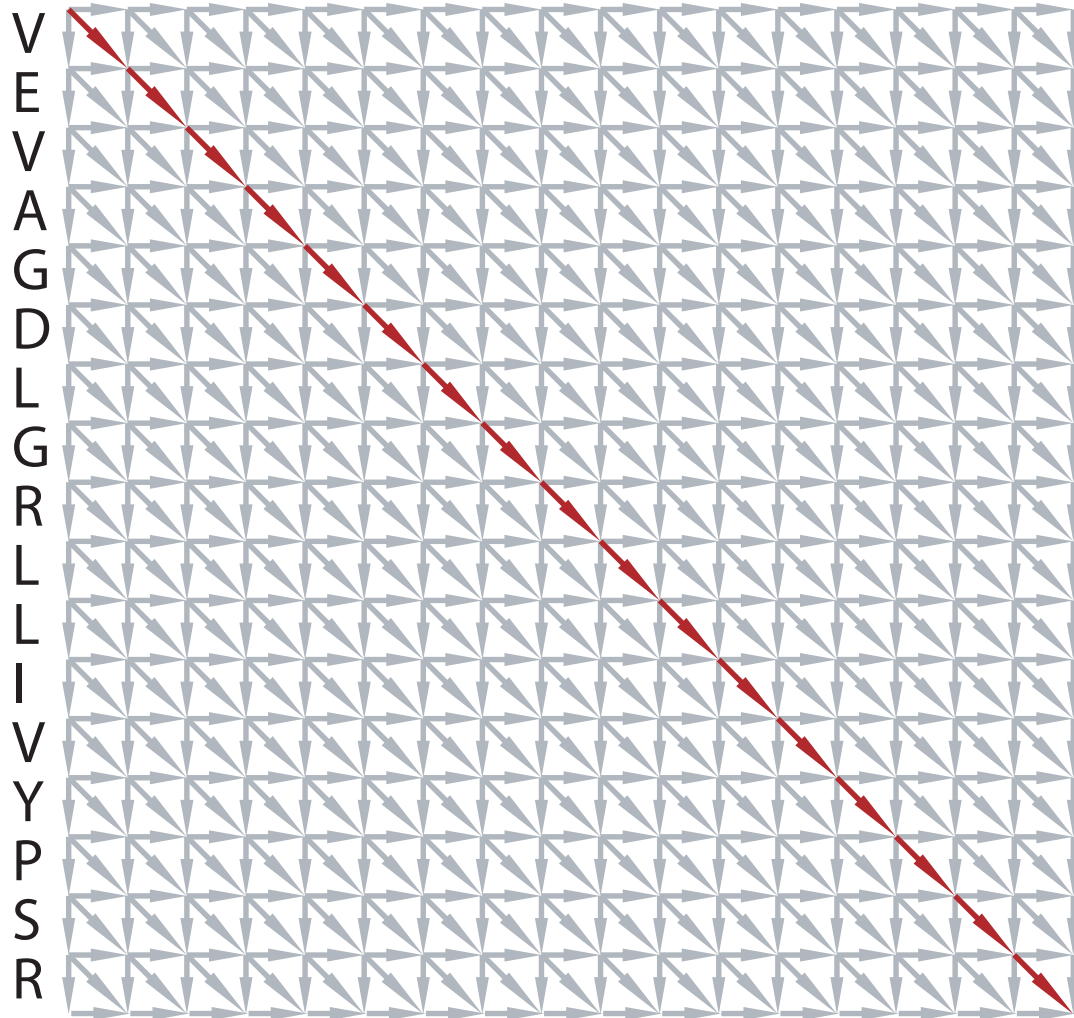


<i>pongo</i>	V	D	E	V	G	G	E	L	G	R	L	F	V	V	P	T	Q
<i>gorilla</i>	V	E	V	A	G	D	L	G	R	L	L	I	V	Y	P	S	R
<b>score</b>	4	2	-2	0	6	-6	-3	-4	-2	-2	4	0	4	-1	7	4	1

# Pongo

V D E V G G E L G R L F V V P T Q

Gorilla

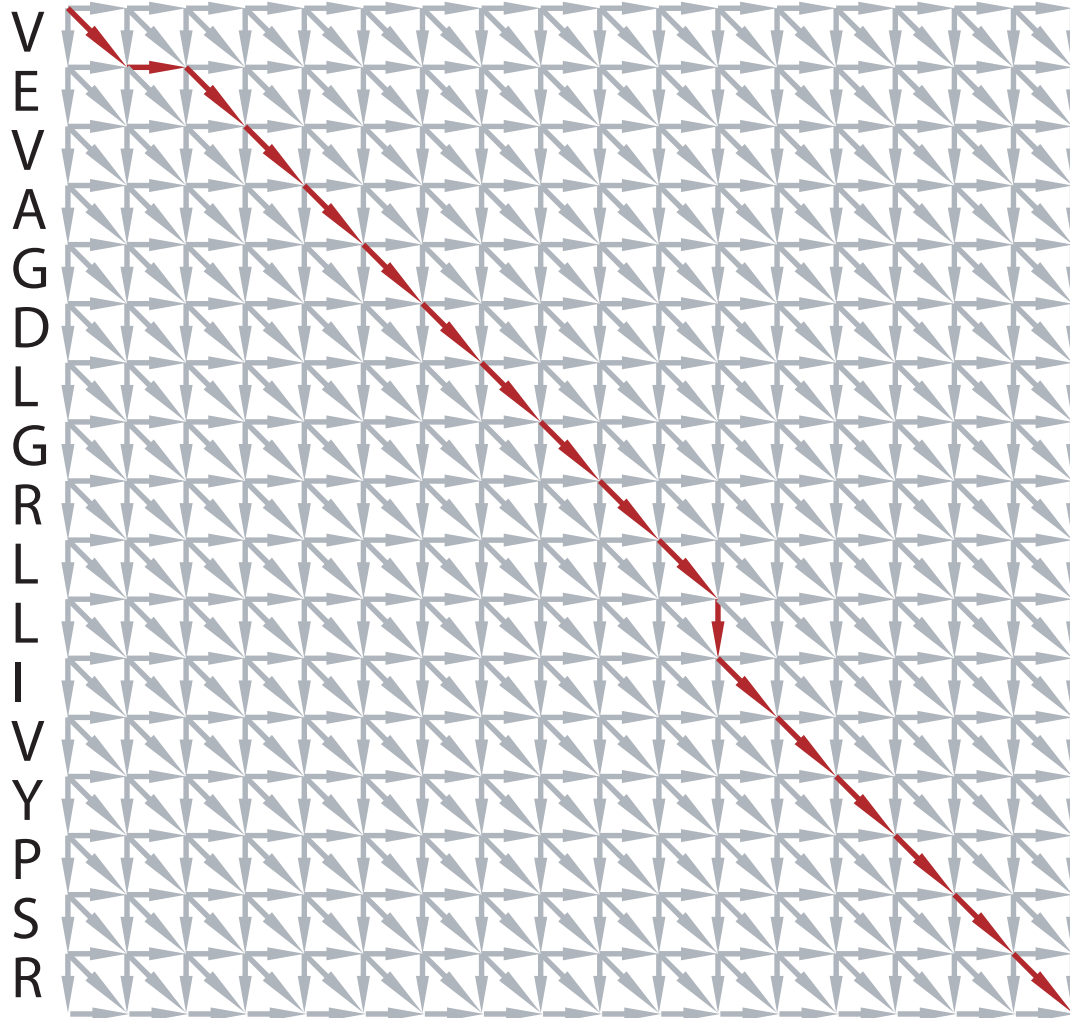


<i>Pongo</i>	V	D	E	V	G	G	E	L	G	R	L	-	F	V	V	P	T	Q
<i>Gorilla</i>	V	-	E	V	A	G	D	L	G	R	L	L	I	V	Y	P	S	R
<b>Score</b>	4	-8	5	5	0	6	2	4	6	5	4	-8	0	4	-1	7	4	1

## Pongo

V D E V G G E L G R L F V V P T Q

Gorilla



## Needleman-Wunsch algorithm (paraphrased)

- Work from the top left (beginning of both sequences)
- For each cell store the highest score possible for that cell and a “back” pointer to tell point to the previous step in the best path
- When you reach the lower right corner, you know the optimal score and the back pointers tell you the alignment.

The highest score calculation at each cell only depends on the cell's 3 possible previous neighbors.

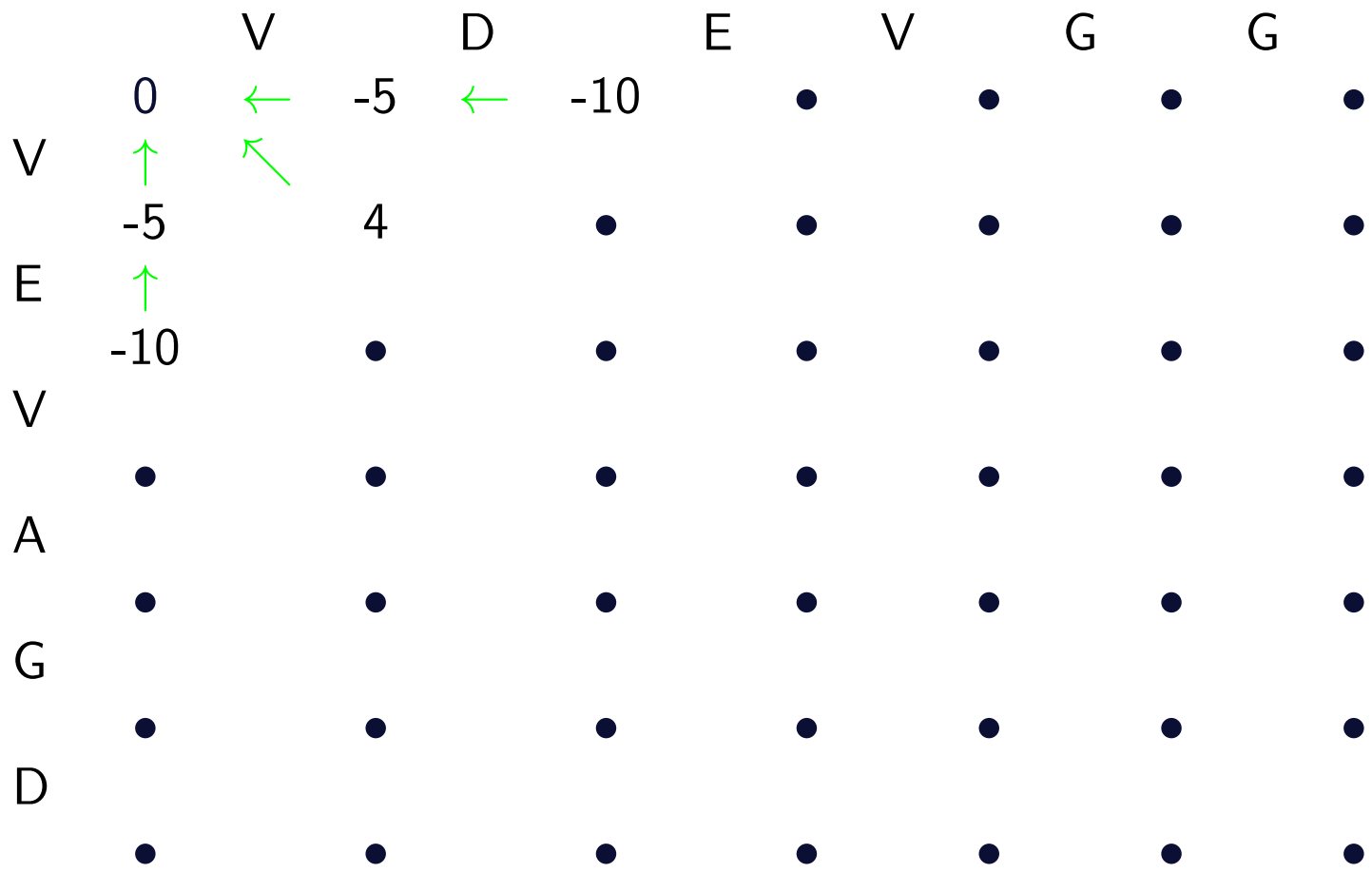
If one sequence is length  $M_1$ , and the other is length  $M_2$ , then Needleman-Wunsch only takes  $\mathcal{O}(M_1M_2)$  calculations.

But there are a **much** larger number of possible alignments (# alignments grows exponentially).



# Using a gap penalty of -5

		V	D	E	V	G	G	
V	0	←	-5	•	•	•	•	•
E	-5	•	•	•	•	•	•	•
V	•	•	•	•	•	•	•	•
A	•	•	•	•	•	•	•	•
G	•	•	•	•	•	•	•	•
D	•	•	•	•	•	•	•	•
	•	•	•	•	•	•	•	•



		V	D	E	V	G	G
V	0	←	←	←	•	•	•
E	-5	↖	←	•	•	•	•
V	-10	↑	•	•	•	•	•
A	-15	•	•	•	•	•	•
G	•	•	•	•	•	•	•
D	•	•	•	•	•	•	•







		V	D	E	V	G	G	E	L	G	R
V	0	← -5	← -10	← -15	← -20	← -25	← -30	← -35	← -40	← -45	← -50
	↑	↖			↖						
E	-5	4	← -1	← -6	-11	← -16	← -21	← -26	← -31	← -36	← -41
	↑	↑	↖	↖				↖			
V	-10	-1	6	4	← -1	← -6	← -11	-16	← -21	← -26	← -31
	↑	↖	↑	↖	↖						
A	-15	-6	1	4	8	← 3	← -2	← -7	← -12	← -17	← -22
	↑	↑	↑	↖	↖	↖				↖	
G	-20	-11	-4	0	4	8	3	← -2	← -7	-12	← -17
	↑	↑	↑	↑	↑	↖				↖	
D	-25	-16	-9	-5	-1	10	14	← 9	← 4	-1	← -6
	↑	↑	↖	↖	↑	↑	↖	↖			
L	-30	-21	-10	-7	-6	5	9	16	← 11	← 6	← 1
	↑	↑	↑	↑	↖	↑	↑	↑	↖		
G	-35	-26	-15	-12	-6	0	4	11	20	← 15	← 10
	↑	↑	↑	↖	↑	↖	↖	↑	↑	↖	
R	-40	-31	-20	-17	-11	0	6	6	15	26	← 21
	↑	↑	↑	↖	↑	↑	↑	↖	↑	↑	↖
L	-45	-36	-25	-20	-16	-5	1	6	10	21	31
	↑	↑	↑	↑	↖	↑	↑	↑	↖	↑	↑
L	-50	-41	-30	-25	-19	-10	-4	1	10	16	26
	↑	↑	↑	↑	↖	↑	↑	↑	↖	↑	↑
I	-55	-46	-35	-30	-24	-15	-9	-4	5	11	21
	↑	↑	↑	↑	↖	↑	↑	↑	↑	↑	↑
V	-60	-51	-40	-35	-27	-20	-14	-9	0	6	16
	↑	↖	↑	↑	↖	↑	↑	↑	↑	↑	↑



## Pairwise alignment is a beautiful topic in bioinformatics

- Clever programming tricks let us find the best-scoring alignment quickly (in  $\mathcal{O}(M_1M_2)$  number of computations, despite the fact that the number of alignments increases exponentially with  $M$ )
- The additive scoring system:
  - can incorporate biological knowledge (via empirically-based substitution matrices)
  - can be justified in terms of powerful statistical methodology (maximum likelihood).

## Pairwise alignment costs

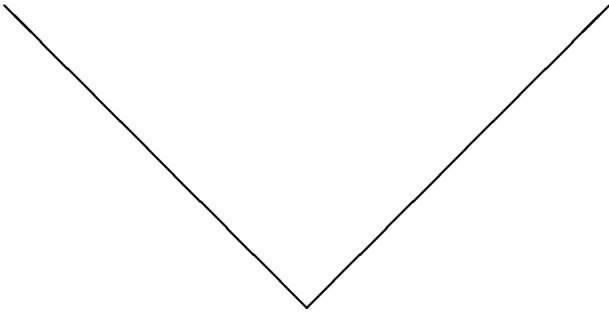
---

- Paul Lewis will explain likelihood tomorrow,
- Additive costs can be justified as approximations to the log of likelihoods if:
  - we can identify the events that must have occurred in generate the data, and
  - we can assign (relative) probabilities based on whether these events are rare or common.

<i>Pongo</i>	V	D	E	V	G	G	E	L	G	R	L	-	F	V	V	P	T	Q
<i>Gorilla</i>	V	-	E	V	A	G	D	L	G	R	L	L	I	V	Y	P	S	R
<b>Score</b>	4	-8	5	5	0	6	2	4	6	5	4	-8	0	4	-1	7	4	1

*Pongo*

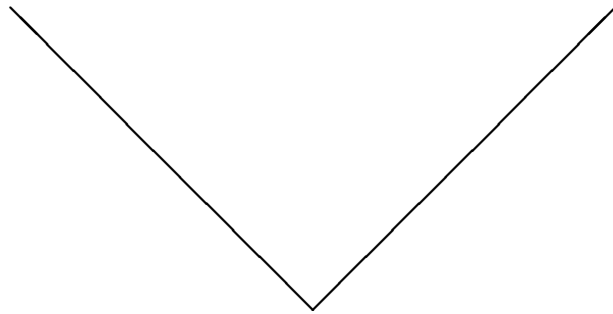
*Gorilla*



<i>Pongo</i>	<b>V</b>	D	E	V	G	G	E	L	G	R	L	-	F	V	V	P	T	Q
<i>Gorilla</i>	<b>V</b>	-	E	V	A	G	D	L	G	R	L	L	I	V	Y	P	S	R
<b>Score</b>	4	-8	5	5	0	6	2	4	6	5	4	-8	0	4	-1	7	4	1

*Pongo*

*Gorilla*



$V \leftrightarrow V$

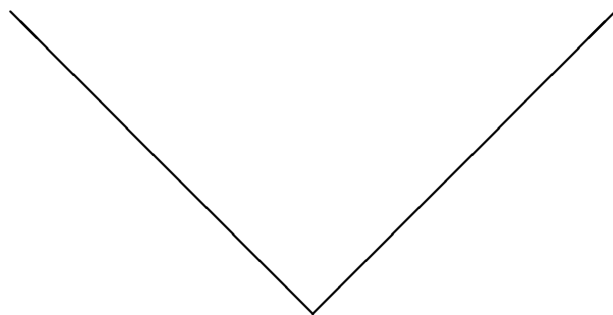
$$\mathbb{P}(\text{pos. 1}) = \mathbb{P}(V \leftrightarrow V)$$



<i>Pongo</i>	<b>V</b>	<b>D</b>	E	V	G	G	E	L	G	R	L	-	F	V	V	P	T	Q
<i>Gorilla</i>	<b>V</b>	-	E	V	A	G	D	L	G	R	L	L	I	V	Y	P	S	R
<b>Score</b>	4	-8	5	5	0	6	2	4	6	5	4	-8	0	4	-1	7	4	1

*Pongo*

*Gorilla*



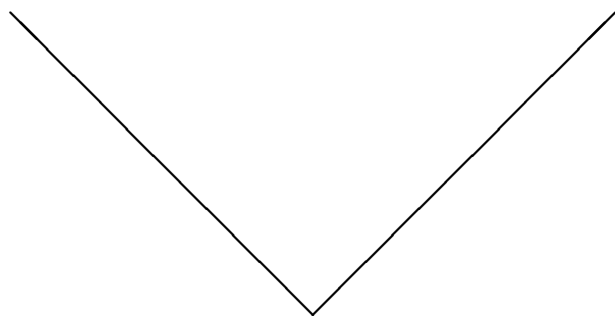
V ↔ V  
D ↔ -

$$\mathbb{P}(\text{pos. 1 - 2}) = \mathbb{P}(V \leftrightarrow V) \times \mathbb{P}(D \leftrightarrow -)$$

<i>Pongo</i>	<b>V</b>	<b>D</b>	<b>E</b>	V	G	G	E	L	G	R	L	-	F	V	V	P	T	Q
<i>Gorilla</i>	<b>V</b>	-	<b>E</b>	V	A	G	D	L	G	R	L	L	I	V	Y	P	S	R
<b>Score</b>	4	-8	5	5	0	6	2	4	6	5	4	-8	0	4	-1	7	4	1

*Pongo*

*Gorilla*



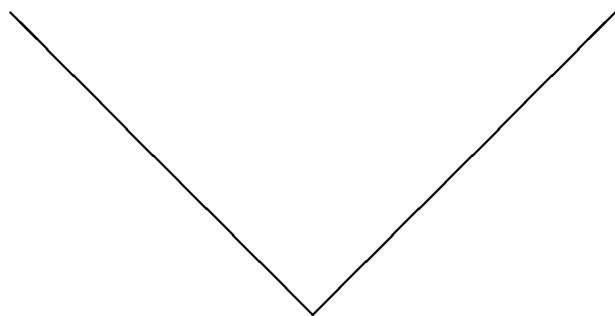
**V**  $\leftrightarrow$  **V**  
**D**  $\leftrightarrow$  -  
**E**  $\leftrightarrow$  **E**

$$\begin{aligned} \mathbb{P}(\text{pos. 1 - 3}) &= \mathbb{P}(V \leftrightarrow V) \\ &\quad \times \mathbb{P}(D \leftrightarrow -) \\ &\quad \times \mathbb{P}(E \leftrightarrow E) \end{aligned}$$

<i>Pongo</i>	<b>V</b>	<b>D</b>	<b>E</b>	V	G	G	E	L	G	R	L	-	F	V	V	P	T	Q
<i>Gorilla</i>	<b>V</b>	-	<b>E</b>	V	A	G	D	L	G	R	L	L	I	V	Y	P	S	R
<b>Score</b>	4	-8	5	5	0	6	2	4	6	5	4	-8	0	4	-1	7	4	1

*Pongo*

*Gorilla*



$$\begin{array}{l}
 \mathbf{V} \leftrightarrow \mathbf{V} \\
 \mathbf{D} \leftrightarrow - \\
 \mathbf{E} \leftrightarrow \mathbf{E}
 \end{array}
 \ln \mathbb{P}(\text{pos. 1 - 3}) = \ln \mathbb{P}(V \leftrightarrow V)$$

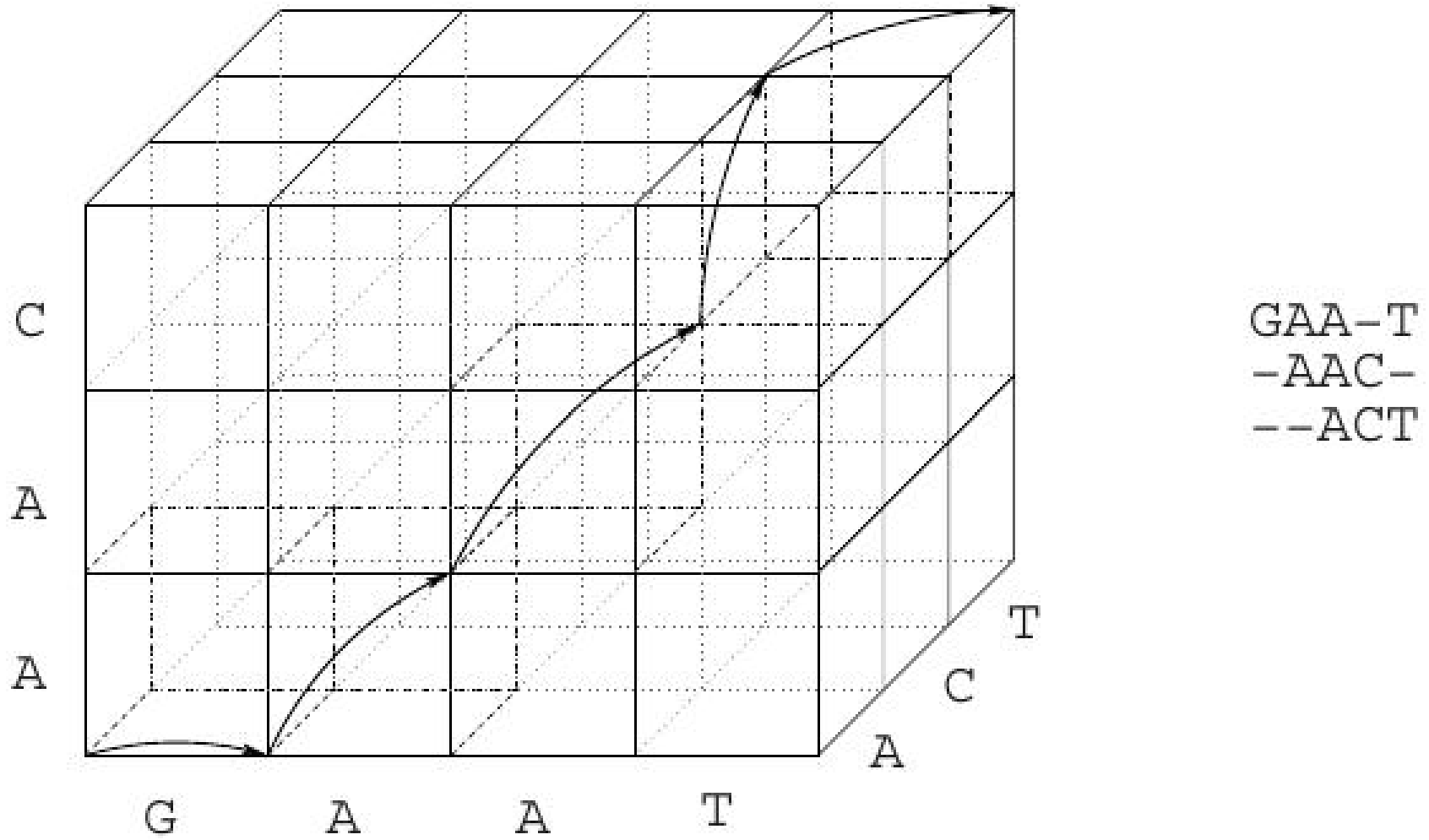
$$\begin{array}{l}
 + \ln \mathbb{P}(D \leftrightarrow -) \\
 + \ln \mathbb{P}(E \leftrightarrow E)
 \end{array}$$

## Pairwise alignment summary

---

- The sum of the substitution and gap cost can serve as a proxy for the log-likelihood under a reasonable model.
- Dynamic programming can let us find the alignment that has the highest likelihood.

from (Rausch and Reinert, 2011)



## Multiple sequence alignment is an ugly topic in bioinformatics

---

- Clever programming tricks help, but we still have to rely on *heuristics* – approaches that provide good solutions, but are not guaranteed to find the best solution.
- The additive scoring system suffers from the fact that we do not observe ancestral sequences.

- $U$  is the set of unaligned sequences
- $T$  is the genealogy tree that describes the ancestry of the sequences
- $H$  is an indel history (specification of where all insertions and deletions in the history of  $U$  occur on the tree  $T$ ).
- $A$  is an alignment of the sequences  $U$

We might want:

- $\mathbb{P}(T \mid U)$  or  $\mathbb{P}(A \mid U)$  or  $\mathbb{P}(T, A \mid U)$ . BaliPhy approximates these quantities, but it is tough to do for large datasets.
- $\hat{H}$  which maximizes  $\mathbb{P}(H \mid U, T)$ . ProtPal (Westesson et al., 2012) approximates this (but we have to know  $T$ )

## Sum of Pairs scoring

---

Most MSA programs optimize a fairly strange score:

$$SP = \sum_i \sum_j w_{ij} d(A_i, A_j)$$

where  $A_i$  is the alignment pruned down to just sequence  $i$ , and  $w_{ij}$  is a weight for the comparison between sequences  $i$  and  $j$ .

$d(A_i, A_j)$  can be:

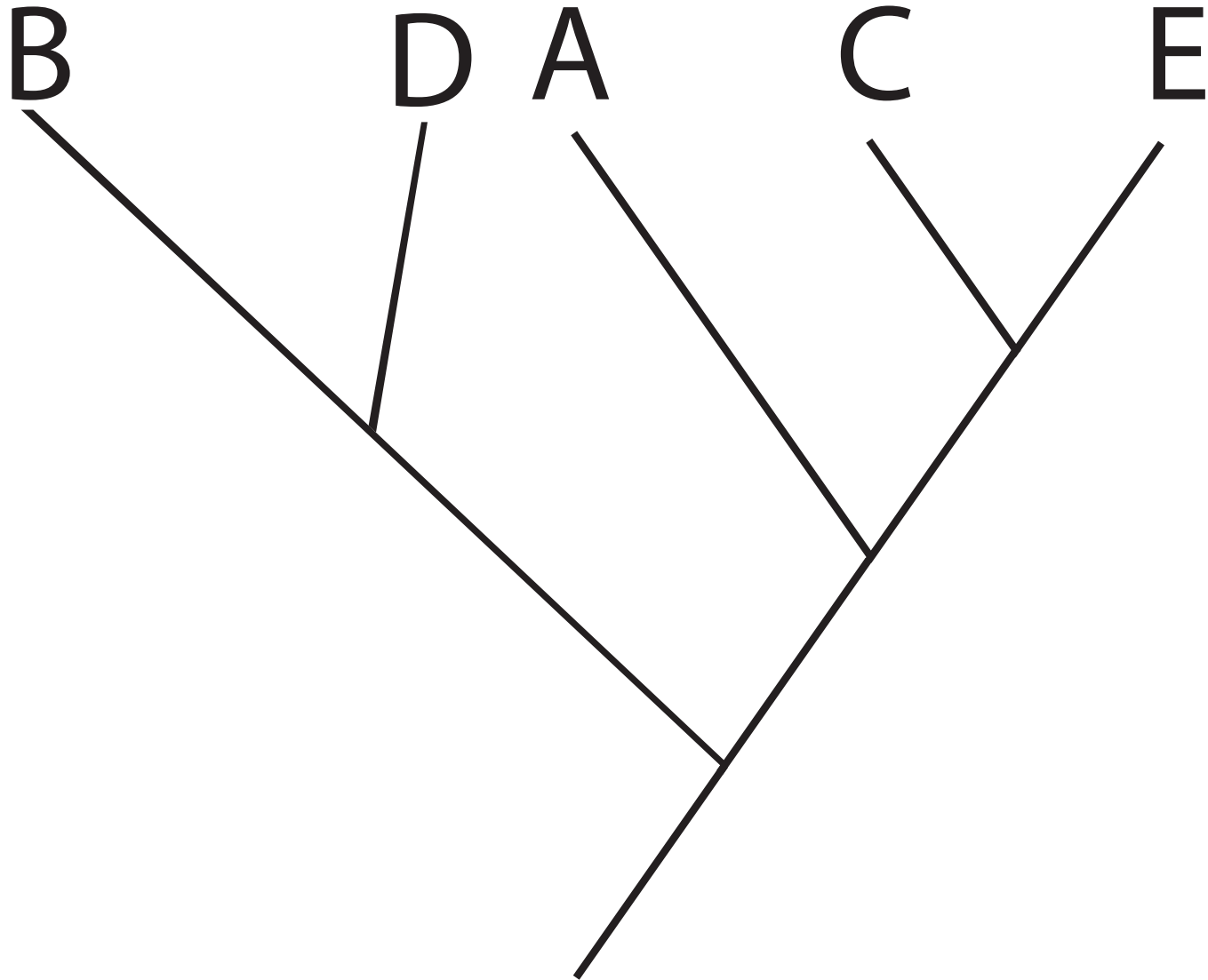
- a measure of the distance from  $A_i$  to  $A_j$  or
- a measure of the consistency of the alignment  $A$  with a pairwise alignment of  $i$  to  $j$ .

We usually cannot guarantee that we have found the alignment that optimizes the sum of pairs score.



# Aligning more than two sequences

---



# **Progressive alignment**

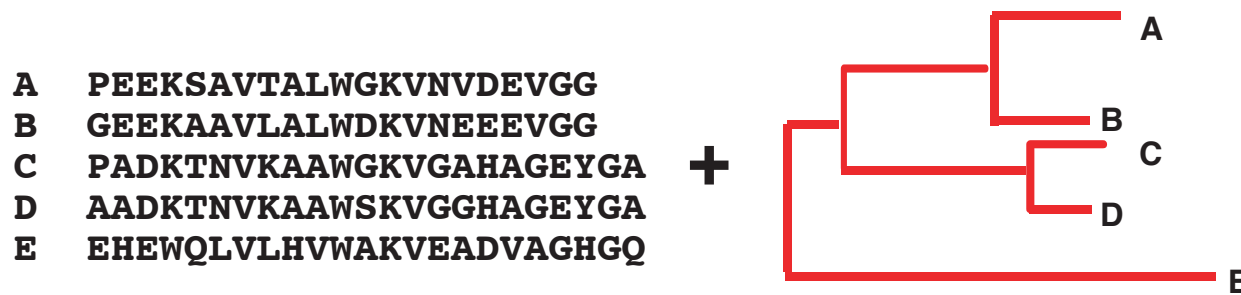
---

An approximate method for producing multiple sequence alignments using a guide tree.

- Perform pairwise alignments to produce a distance matrix
- Produce a guide tree from the distances
- Use the guide tree to specify the ordering used for aligning sequences, closest to furthest.

		<b>pairwise alignment</b>						
A	PEEKSAVTALWGKVVNDEVGG	→	A	-				
B	GEEKA AVLALWDKVN EEEVGG		B	.17	-			
C	PADKTNVKA AWGKVG AHAGEYGA		C	.59	.60	-		
D	AADKTNVKA AWSKVGGHAGEYGA		D	.59	.59	.13	-	
E	EHEWQLVLHVWAKVEADVAGHGQ		E	.77	.77	.75	.75	-

↓ **tree inference**



↓ **alignment stage**

```

A PEEKSAVTALWGKVN--VDEVGG
B GEEKA AVLALWDKVN--EEEVGG
C PADKTNVKA AWGKVG AHAGEYGA
D AADKTNVKA AWSKVGGHAGEYGA
E EHEWQLVLHVWAKVEADVAGHGQ
  
```

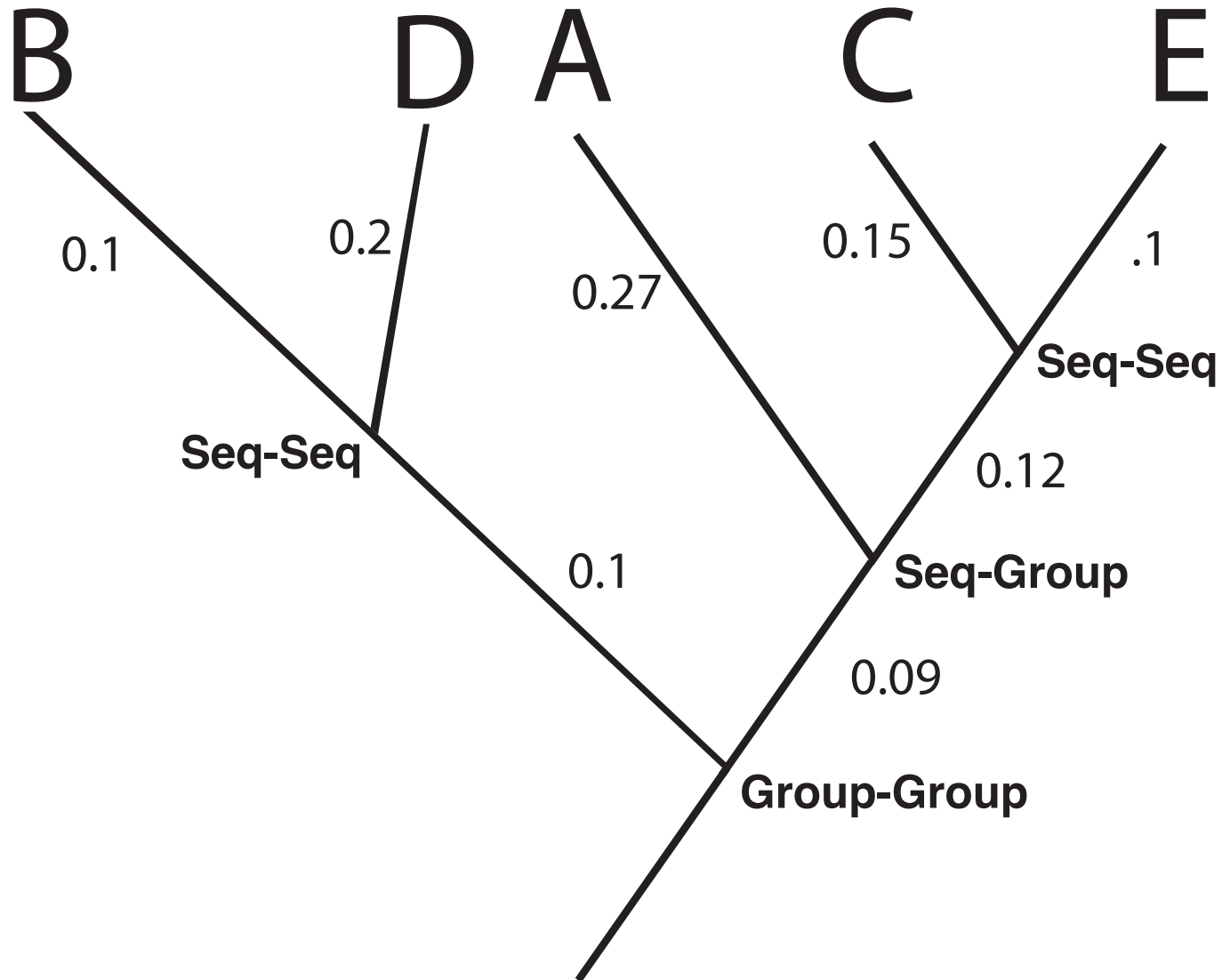
## **Alignment stage of progressive alignments**

Sequences of clades become grouped as the algorithm descends the tree. Alignment at each step involves

- Sequence-Sequence,
- Sequence-Group, or
- Group-Group

# Aligning multiple sequences

---



# Group-to-Group alignment

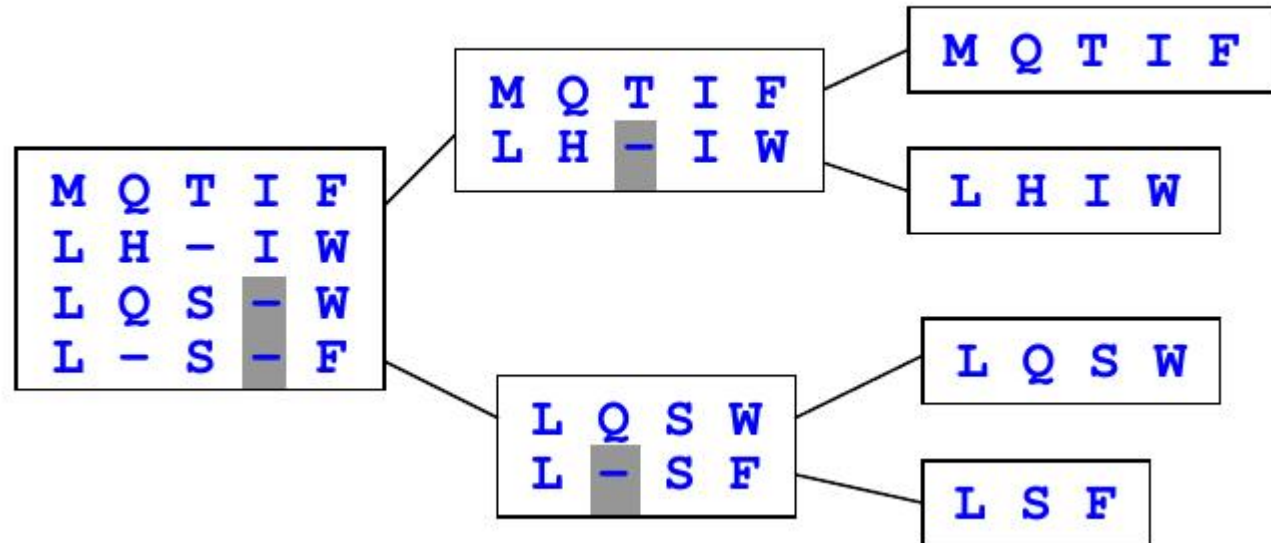
---



# Group-to-group alignments

---

Adding a gap to a group means that every member of that group gets a gap at that position.



from Edgar (2004)

## Group-to-group alignment

Usually the scores for each edge in the Needleman-Wunsch graph are calculated using a “sum of pairs” scoring system.

Many tools<sup>1</sup> uses weights assigned to each sequence in a group to down-weight closely related sequences so that they are not overrepresented - this is a weighted sum-of-pair scoring system.

---

<sup>1</sup>e.g. Clustal and MAFFT



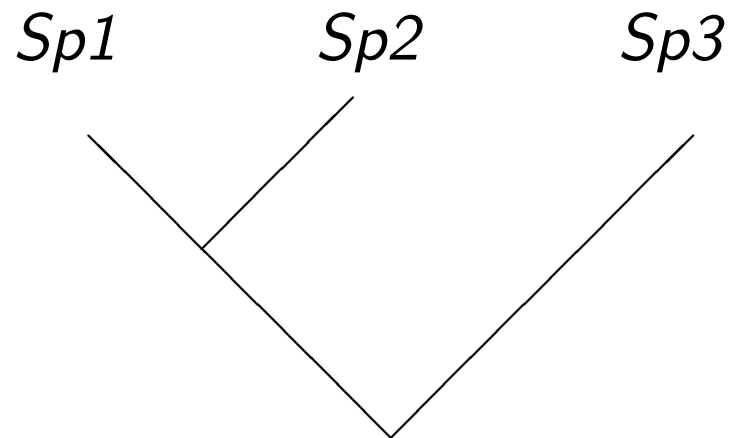
# Greedy choices leading to failure to find the best alignment

---

Consider the scoring scheme:

match = 0    mismatch = -3    gap = -7

Guide Tree:



Sequences:

<i>Sp1</i>	GACCGTG
<i>Sp2</i>	GCCGTAG
<i>Sp3</i>	GACCGTAG

## Greedy choices leading to failure to find the best alignment

---

match = 0    mismatch = -3    gap = -7

ungapped1 vs2

<i>Sp1</i>	G	A	C	C	G	T	G	
<i>Sp2</i>	G	C	C	G	T	A	G	
<b>Score</b>	0	-3	0	-3	-3	-3	0	<b>Total= -12</b>

would be preferred over gapped1 vs2:

<i>Sp1</i>	G	A	C	C	G	T	-	G	
<i>Sp2</i>	G	-	C	C	G	T	A	G	
<b>Score</b>	0	-7	0	0	0	0	-7	0	<b>Total= -14</b>

Adding a *Sp3* to ungapped1vs2:

---

<i>Sp1</i>	G	-	A	C	C	G	T	G
<i>Sp2</i>	G	-	C	C	G	T	A	G

---

<i>Sp3</i>	G	A	C	C	G	T	A	G
------------	---	---	---	---	---	---	---	---

---

This implies 1 indel, and 4 substitutions. Score = -19 \*

**If** we had been able to use gapped1vs2 then we could have:

---

<i>Sp1</i>	G	A	C	C	G	T	-	G
<i>Sp2</i>	G	-	C	C	G	T	A	G

---

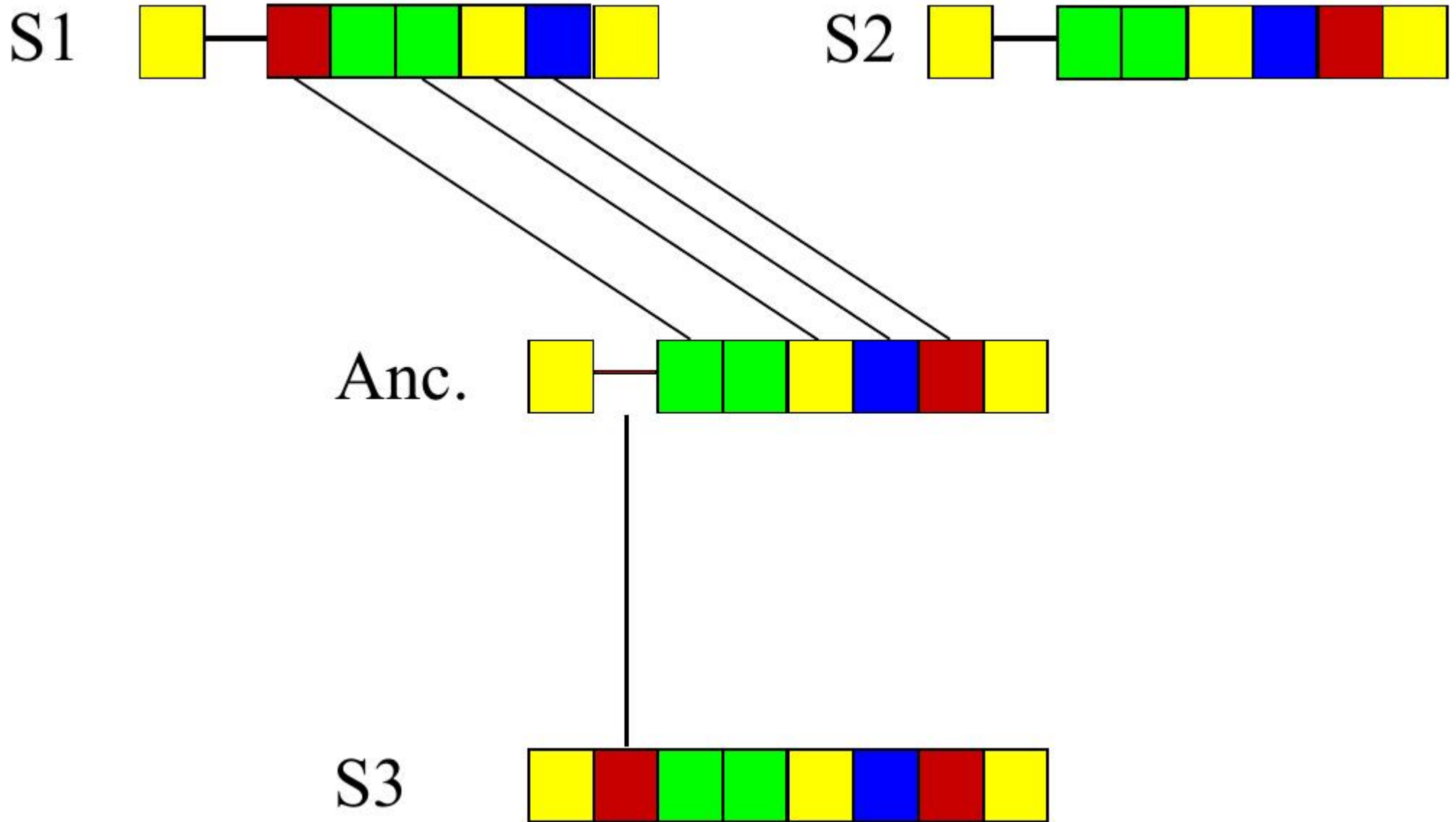
<i>Sp3</i>	G	A	C	C	G	T	A	G
------------	---	---	---	---	---	---	---	---

---

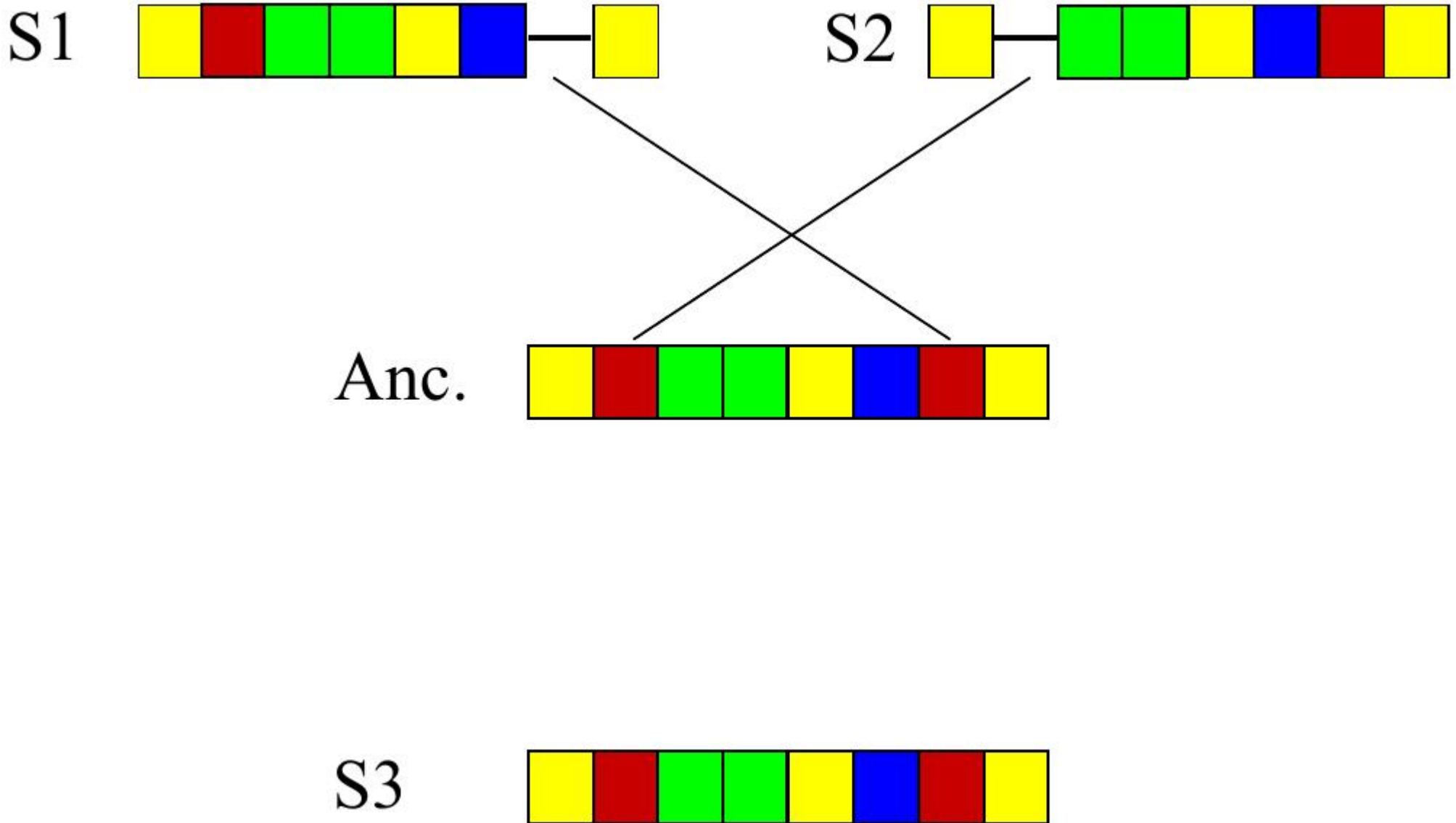
score = -14 \*

\* = "sort of..."

Score = -19 if we count events, but sum of pairs score would differ



Score = -14 if we count events, but sum of pairs score would differ



## **Polishing (aka “iterative alignment” can correct some errors caused by greedy heuristics)**

---

1. break the alignment into 2 groups of sequences (often by breaking an edge in the merge tree).
2. realign those 2 groups to each other
3. keep the realignment if it improves the score

Opal also uses random 3-group polishing.

# Sequence annealing

---

AMAP (Schwartz and Pachter, 2007) and FSA (Bradley et al., 2009) use a sequence annealing approach:

- start with trivial alignments (all residues opposite gaps),
- anchor regions by aligning long matches,
- merge columns as long as the score keeps improving.

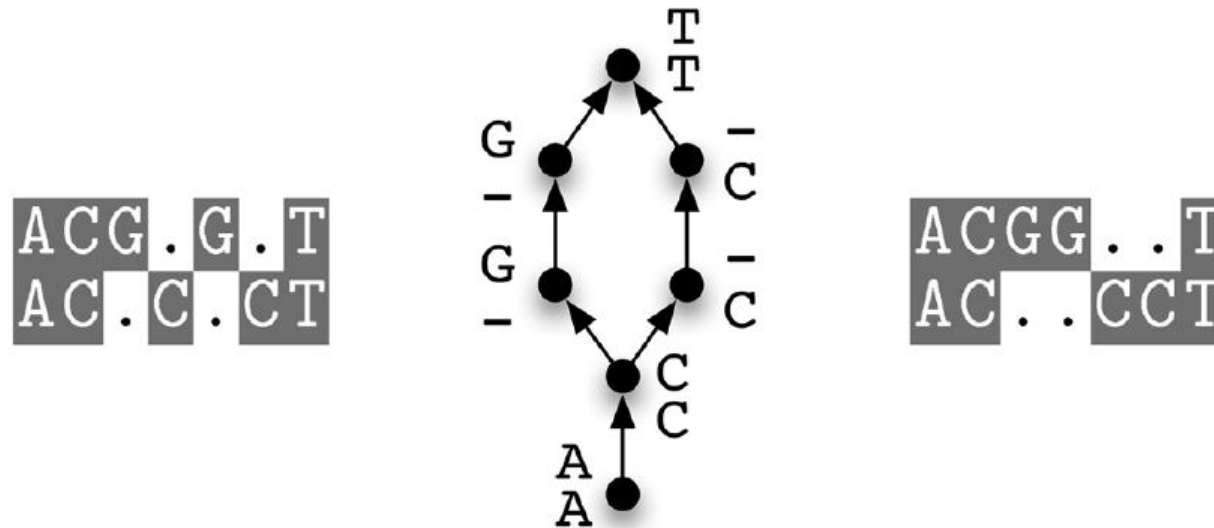


Fig. 3 of (Bradley et al., 2009)

## Weighted sum of pairs scoring system

---

Assigns a score for a group-to-group by averaging (or summing) the scores all of the implied pairwise alignments.

Frequently  $w_{ij} = w_i w_j$

Group 1			Group 2		
Seq	weight	AA	Seq	weight	AA
taxon A	0.3	V	taxon B	0.15	V
taxon C	0.24	A	taxon D	0.25	M
taxon E	0.19	I			

$$D_{G1,G2} = \frac{\sum_i \sum_j w_i w_j d_{ij}}{n_i n_j}$$

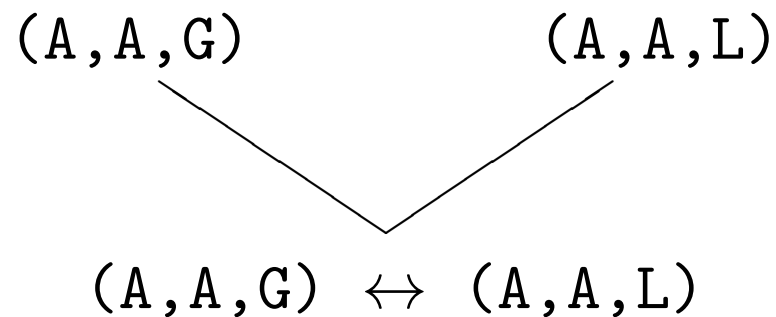


Group 1			Group 2		
Seq	weight	AA	Seq	weight	AA
taxon A	0.3	V	taxon B	0.15	V
taxon C	0.24	A	taxon D	0.25	M
taxon E	0.19	I			

$$\begin{aligned}
D_{G1,G2} &= \frac{\sum_i \sum_j w_i w_j d_{ij}}{n_i n_j} \\
&= \frac{1}{6} [d(V, V)w_A w_B + d(V, M)w_A w_D + d(A, V)w_C w_B \dots \\
&\quad \dots d(A, M)w_C w_D + d(I, V)w_E w_B + d(I, M)w_E w_D] \\
&= \frac{1}{6} (\mathbf{4} \times 0.3 \times 0.15 + \mathbf{1} \times 0.3 \times 0.25 + \mathbf{0} \times 0.24 \times 0.15 \dots \\
&\quad \dots - \mathbf{1} \times 0.24 \times 0.25 + \mathbf{3} \times 0.19 \times 0.15 + \mathbf{1} \times 0.19 \times 0.15) \\
&= 1.46225
\end{aligned}$$

**Imperfect scoring system. Consider one position in a group-to-group alignment:**

---

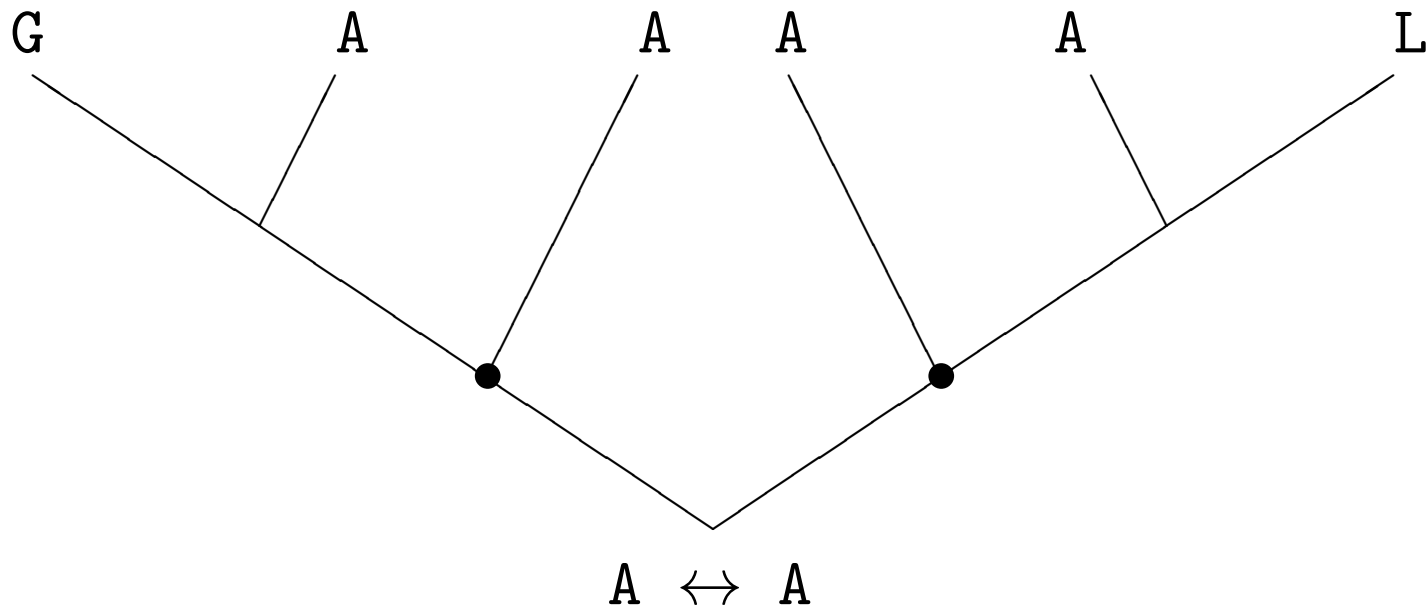


The sum-of-pairs score for aligning would be:

$$\frac{4}{9}(A \leftrightarrow A) + \frac{2}{9}(A \leftrightarrow L) + \frac{2}{9}(G \leftrightarrow A) + \frac{1}{9}(G \leftrightarrow L)$$

But in the context of the tree we might be pretty certain of an  $A \leftrightarrow A$  event

---



Note: weighted sum-of-pairs would help reflect the effect of ancestry better (but still not perfectly; sum-of-pairs techniques are simply not very sophisticated forms of ancestral sequence reconstruction).

## **“Consistency” based alignment**

---

In our sum of pair scoring, we could just check how often each pair of sequences (one from  $G_h$  and one from  $G_v$ ) display the same alignment that they did in pairwise alignment.

T-Coffee (Notredame et al., 2000) introduce the idea of performing group-to-group alignments during progressive alignment using this sense of consistency.

## Indirect consistency arguments

---

In the pairwise alignments,

- *if*  $h_{10} \sim g_{12}$
- *and*  $p_{17} \sim g_{12}$
- *then*  $h_{10}$  should align with  $p_{17}$

## **Probabilistic measures of “consistency”**

The simplest assessment of the consistency of an MSA to pairwise alignments uses just the optimal pairwise alignment of each pair.

Opal (Wheeler and Kececioglu, 2007) uses some suboptimal alignments.

Do et al. (2005) made an important advance by proposing the use of the probability that two residues are aligned during consistency-based alignment (ProbCons).

The same sort of dynamic programming traversal of the alignment grid can give us a probability that 2 residues are aligned.

## **Progressive alignment**

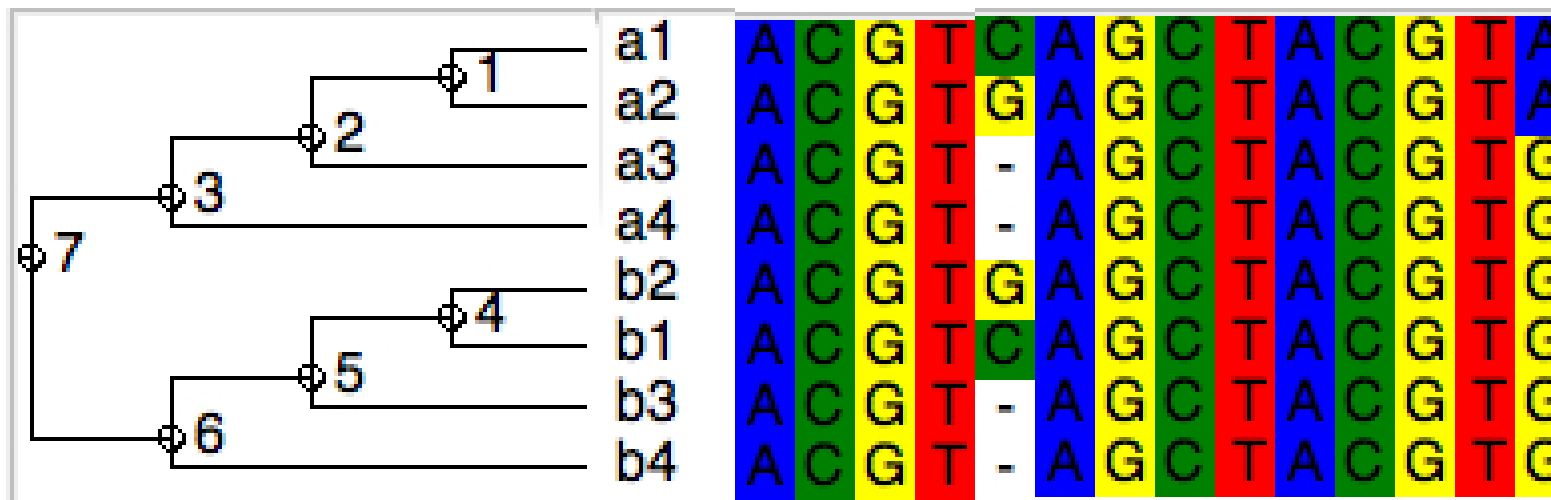
---

- Uses a guide tree to change the MSA problem into a series of pairwise alignment problems;
- May not return the alignment with the best weighted sum-of-pairs scores. Early alignment decisions get “locked in”  
Most aligners try to polish the alignment, but we cannot guarantee that we have found the optimal alignment;
- Reconstruction of ancestral sequences is usually done in a quick-and-dirty, implicit fashion or is not done at all;

# PRANK

---

Löytynoja and Goldman (2005) showed most progressive alignment techniques were particularly prone to compression because of poor ancestral reconstruction:

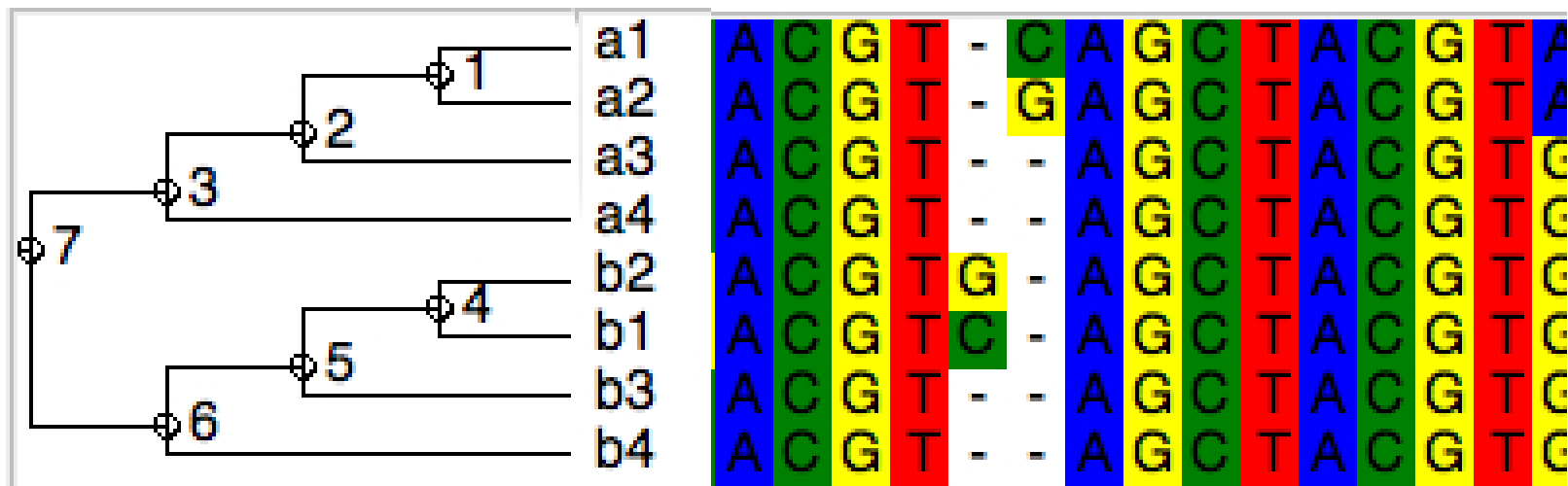


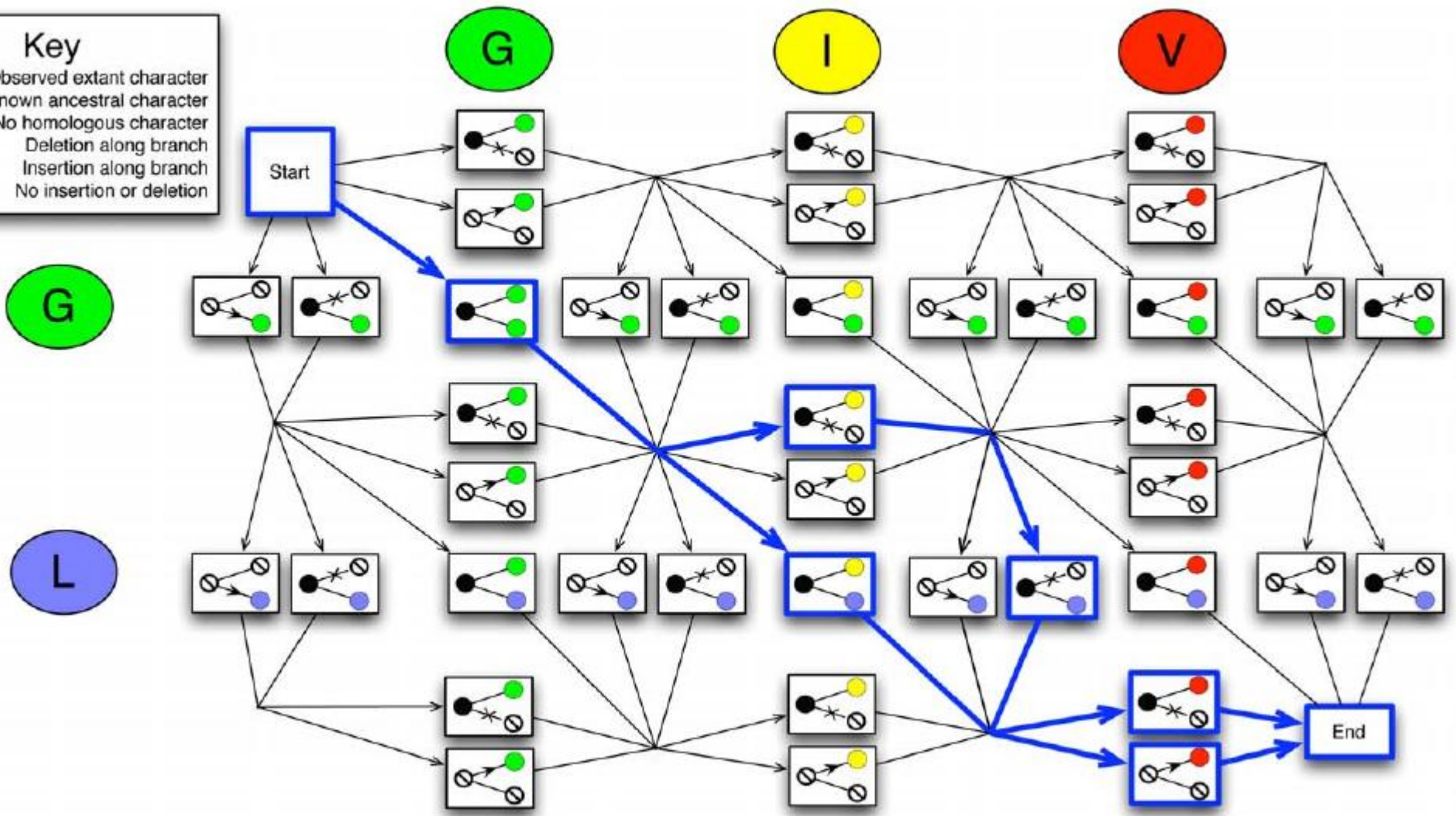
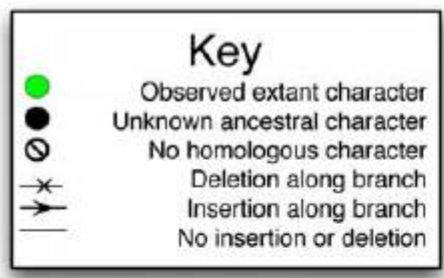


# PRANK

---

Flagging inserted residues allows PRANK to effectively skip over these positions in the ancestor, producing more phylogenetically-sensible alignments:





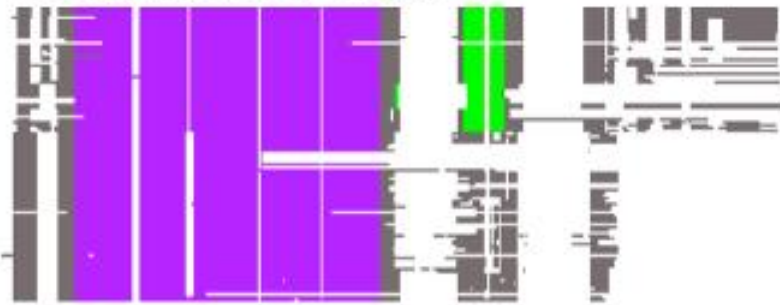
ProtPal is similar to PRANK, but is retains a set of inferred ancestral seqs.  
 Fig. 5 of Westesson et al. (2012)

```
mafft-ginsi
```

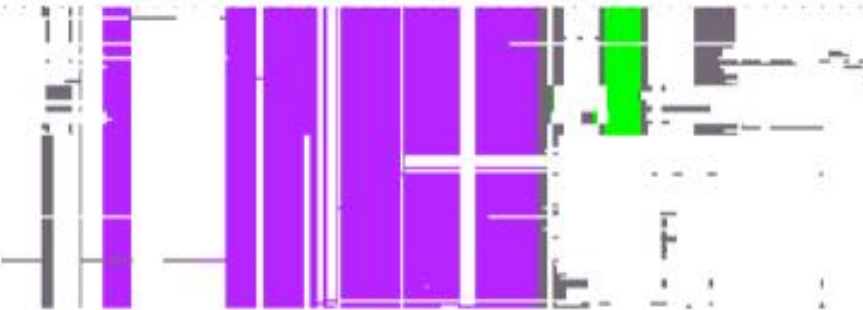
```
mafft-ginsi --allowshift --unalignlevel amax
```

$$M(A, B, d) = M_{\text{orig}}(A, B) - a(d)$$

**c** Conventional G-INS-i



**d** G-INS-i with VSM ( $a_{\text{max}} = 0.8$ )



MAFFT now has a variable scoring matrix to deal with regions with high rates of molecular evolution. Fig. 2 Katoh and Standley (2016).

## **Impact of the guide tree**

---

Using a guide tree can bias subsequent tree inference toward the guide tree.

This can also cause inflated support.

Ironically, this effect may be more of a problem for a more evolutionarily-sensible aligner such as PRANK or ProtPal!

# Dealing with alignment ambiguity

(a)

	X			Y						Z		
	1	2	3	4	5	6	7	8	9	1	1	1
										0	1	2
Outgroup	T	A	G	A	G	C	A	C	T	C	A	G
Taxon A	T	A	G	A	G	C	A	C	T	C	A	G
Taxon B	T	A	G	T	G	A	A	G	C	C	A	G
Taxon C	T	A	G	T	G	A	A	G	C	C	A	G
Taxon D	T	A	G		A	G	C			C	A	G
Taxon E	T	A	G		A	G	C			C	A	G

(b)

	X			Y						Z		
	1	2	3	4	5	6	7	8	9	1	1	1
										0	1	2
Outgroup	T	A	G	A	G	C	A	C	T	C	A	G
Taxon A	T	A	G	A	G	C	A	C	T	C	A	G
Taxon B	T	A	G	T	G	A	A	G	C	C	A	G
Taxon C	T	A	G	T	G	A	A	G	C	C	A	G
Taxon D	T	A	G	A	G	C	-	-	-	C	A	G
Taxon E	T	A	G	A	G	C	-	-	-	C	A	G

(c)

	X			Y						Z		
	1	2	3	4	5	6	7	8	9	1	1	1
										0	1	2
Outgroup	T	A	G	A	G	C	A	C	T	C	A	G
Taxon A	T	A	G	A	G	C	A	C	T	C	A	G
Taxon B	T	A	G	T	G	A	A	G	C	C	A	G
Taxon C	T	A	G	T	G	A	A	G	C	C	A	G
Taxon D	T	A	G	-	-	-	A	G	C	C	A	G
Taxon E	T	A	G	-	-	-	A	G	C	C	A	G

# Dealing with alignment ambiguity - deletion

(a)

X			Y						Z		
1	2	3	4	5	6	7	8	9	1	1	1
									0	1	2

Outgroup  
Taxon A  
Taxon B  
Taxon C  
Taxon D  
Taxon E

T	A	G	A	G	C	A	C	T	C	A	G		
T	A	G	A	G	C	A	C	T	C	A	G		
T	A	G	T	G	A	A	G	C	C	A	G		
T	A	G	T	G	A	A	G	C	C	A	G		
T	A	G	A	G	C						C	A	G
T	A	G	A	G	C						C	A	G

X			Z		
1	2	3	1	1	1
			0	1	2

Outgroup  
Taxon A  
Taxon B  
Taxon C  
Taxon D  
Taxon E

T	A	G	C	A	G
T	A	G	C	A	G
T	A	G	C	A	G
T	A	G	C	A	G
T	A	G	C	A	G
T	A	G	C	A	G

X			Y						Z		
1	2	3	4	5	6	7	8	9	1	1	1
									0	1	2

Outgroup  
Taxon A  
Taxon B  
Taxon C  
Taxon D  
Taxon E

T	A	G	A	G	C	A	C	T	C	A	G
T	A	G	A	G	C	A	C	T	C	A	G
T	A	G	T	G	A	A	G	C	C	A	G
T	A	G	T	G	A	A	G	C	C	A	G
T	A	G	?	?	?	-	-	-	C	A	G
T	A	G	?	?	?	-	-	-	C	A	G

## Filtering

---

**GUIDANCE2 web-server** (Sela et al., 2015) provides filtering of columns based on:

- GUIDANCE score (Penn et al., 2010) which reflects sensitivity of the alignment to poorly supported parts of the guide tree;
- Head-or-Tails algorithm (Landan and Graur, 2007) which compares the alignment of the sequences to the alignment that you would get from reversed forms of the sequences; and
- sampling over many gap penalties.

Other tools, such as Gblocks, examine properties of the columns in the matrix.

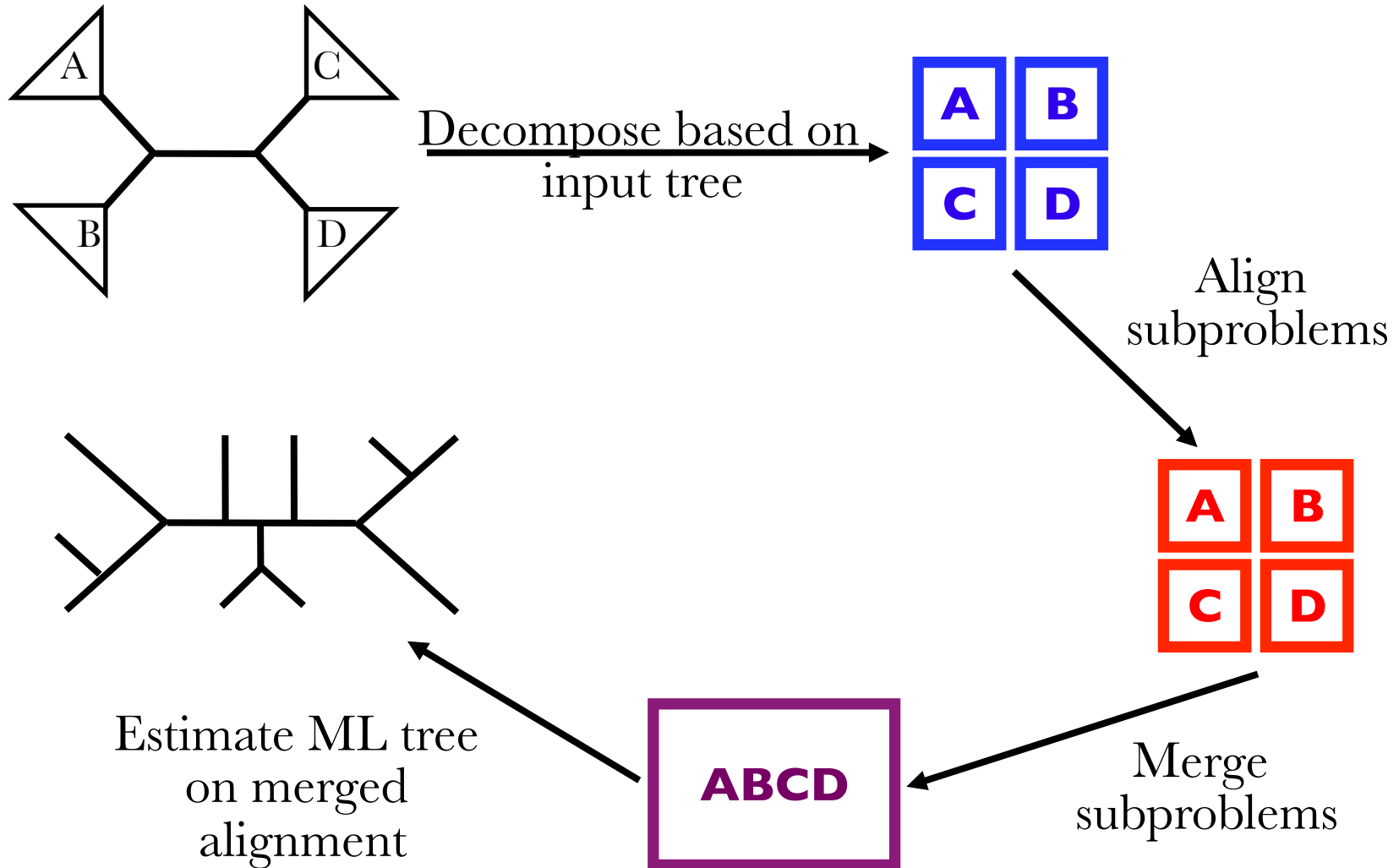
## Simultaneous tree inference and alignment

- Ideally we would address uncertainty in both types of inference at the same time
- Allows for application of statistical models to improve inference and assessments of reliability
- Just now becoming feasible: BAliPhy (Redelings and Suchard, 2005)  
See also: POY (Wheeler, Gladstein, Laet, 2002), Handel (Holmes and Bruno, 2001) , and BEAST(Lunter et al., 2005; Drummond and Rambaut, 2007). SATé (Liu et al., 2009).

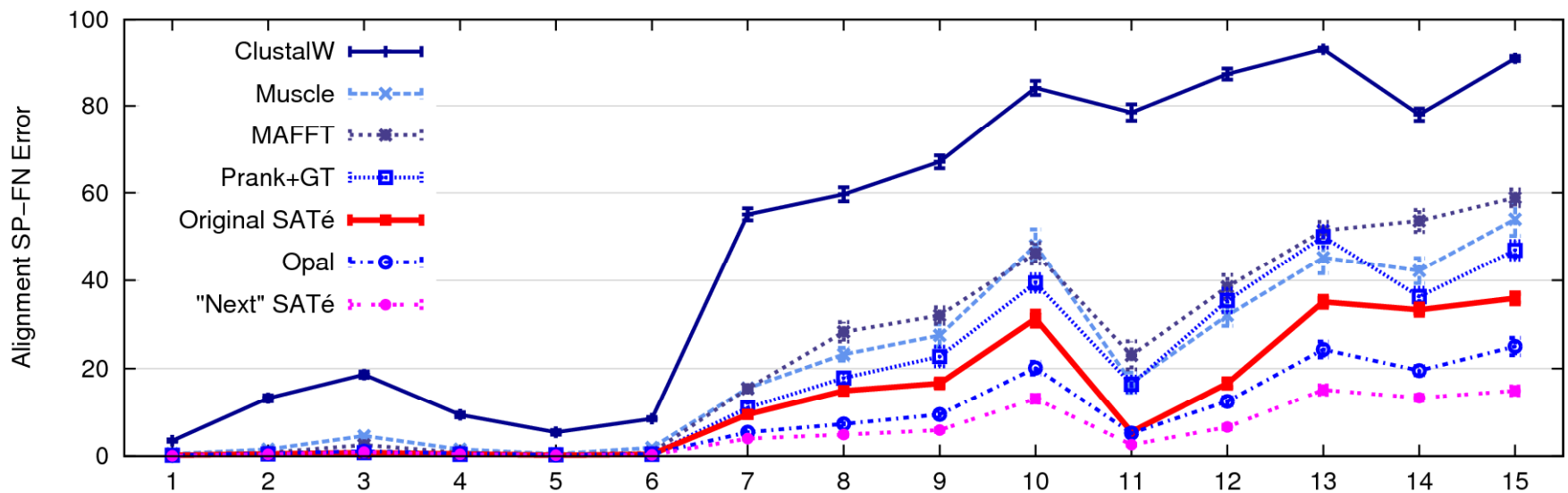
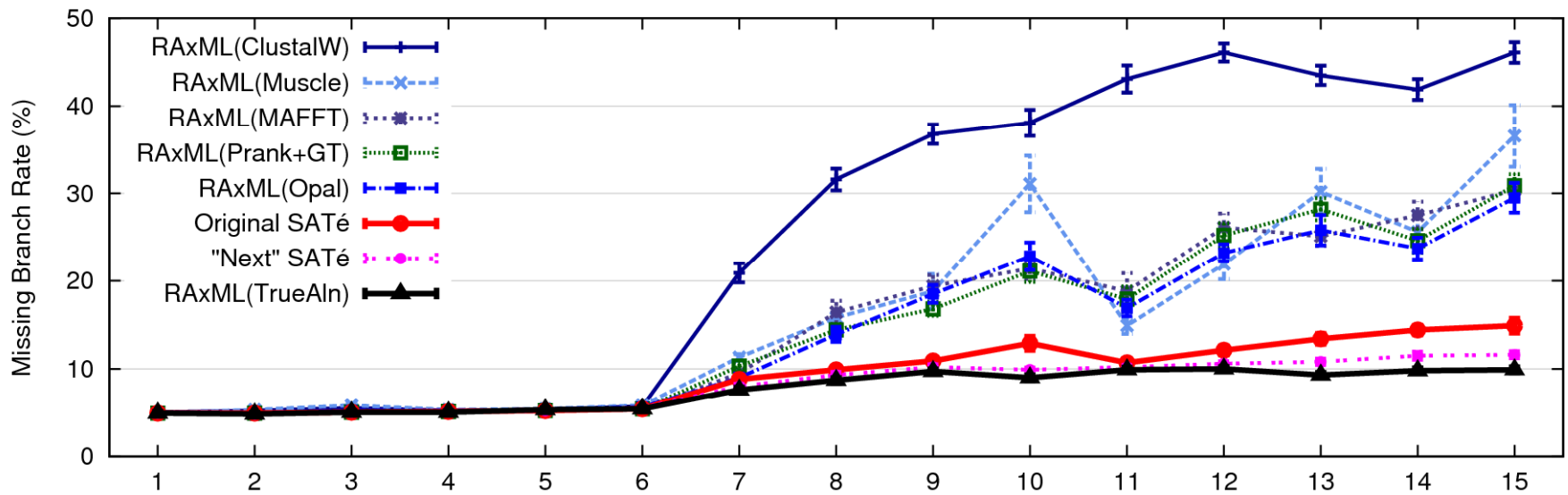


# SATé repeats the following steps until termination

---



# SATé simulation results



## Methods similar to SATé

---

- PASTA (Mirarab et al., 2015) uses overlapping subproblems and then transitivity of homology to be faster and give higher tree accuracy than SATé
- UPP (Nam-phuong et al., 2015)
  1. constructs a backbone alignment and tree based on a random selection of the samples.
  2. builds many HMM's over subtrees of the backbone tree
  3. aligns the rest of the sequences to the HMM's and chooses the best scoring HMM for each sequence.
  4. uses the transitivity of homology

## Conclusions

---

- Evolutionary multiple sequence alignment is still a very active area of research.
- We are hampered by:
  - lacking a good criterion to optimize (when  $T$  is unknown).
  - being forced to use rough heuristics to optimize the sum of pairs scores.
- Filtering throws away information, but may be helpful
- Most phylogenetic inference tools ignore information from the indel process (but see Rivas et al. (2008); Rivas and Eddy (2013) and talk to DZ)
- See if BaliPhy can run on your data!

## References

---

- Bouchard-Côté, A. and Jordan, M. I. (2013). Evolutionary inference via the poisson indel process. *Proceedings of the National Academy of Sciences*, 110(4):1160–1166.
- Bradley, R. K., Roberts, A., Smoot, M., Juvekar, S., Do, J., Dewey, C., Holmes, I., and Pachter, L. (2009). Fast Statistical Alignment. *PLoS Computational Biology*, 5(5).
- Chatzou, M., Magis, C., Chang, J.-M., Kemena, C., Bussotti, G., Erb, I., and Notredame, C. (2015). Multiple sequence alignment modeling: methods and applications. *Briefings in bioinformatics*, page bbv099.
- Do, C. B., Mahabhashyam, M. S., Brudno, M., and Batzoglou, S. (2005). Probcons: Probabilistic consistency-based multiple sequence alignment. *Genome research*, 15(2):330–340.

Drummond, A. J. and Rambaut, A. (2007). Beast: Bayesian evolutionary analysis by sampling trees. *BMC Evol. Biol.*, 7:214.

Edgar, R. (2004). MUSCLE: a multiple sequence alignment method with reduced time and space complexity. *BMC Bioinformatics*, 5:113.

Holmes, I. and Bruno, W. J. (2001). Evolutionary HMMs: a Bayesian approach to multiple alignment. *Bioinformatics (Oxford, England)*, 17(9):803–820.

Hossain, A. M. M., Blackburne, B. P., Shah, A., and Whelan, S. (2015). Evidence of statistical inconsistency of phylogenetic methods in the presence of multiple sequence alignment uncertainty. *Genome biology and evolution*, 7(8):2102–2116.

Katoh, K. and Standley, D. M. (2016). A simple method to control over-alignment in the mafft multiple sequence alignment program. *Bioinformatics*, page btw108.

Landan, G. and Graur, D. (2007). Heads or tails: a simple reliability check

for multiple sequence alignments. *Molecular Biology and Evolution*, 24(6):1380–1383.

Levy Karin, E., Rabin, A., Ashkenazy, H., Shkedy, D., Avram, O., Cartwright, R. A., and Pupko, T. (2015). Inferring indel parameters using a simulation-based approach. *Genome Biology and Evolution*.

Liu, K., Raghavan, S., Nelesen, S., Linder, C., and Warnow, T. (2009). Rapid and accurate large-scale coestimation of sequence alignments and phylogenetic trees. *Science*, 324(5934):1561–1564.

Löytynoja, A. and Goldman, N. (2005). An algorithm for progressive multiple alignment of sequences with insertions. *Proceedings of the National Academy of Sciences of the United States of America*, 102(30):10557–10562.

Lunter, G., Miklós, I., Drummond, A., Jensen, J. L., and Hein, J. (2005). Bayesian coestimation of phylogeny and sequence alignment. *BMC Bioinformatics*, 6:83.

- Mirarab, S., Nguyen, N., Guo, S., Wang, L.-S., Kim, J., and Warnow, T. (2015). Pasta: ultra-large multiple sequence alignment for nucleotide and amino-acid sequences. *Journal of Computational Biology*, 22(5):377–386.
- Nam-phuong, D. N., Mirarab, S., Kumar, K., and Warnow, T. (2015). Ultra-large alignments using phylogeny-aware profiles. *Genome biology*, 16(1):1.
- Notredame, C., Higgins, D. G., and Heringa, J. (2000). T-coffee: a novel method for fast and accurate multiple sequence alignment. *Journal of Molecular Biology*, 302(1):205 – 217.
- Penn, O., Privman, E., Landan, G., Graur, D., and Pupko, T. (2010). An alignment confidence score capturing robustness to guide tree uncertainty. *Molecular Biology and Evolution*, 27(8):1759–1767.
- Rausch, T. and Reinert, K. (2011). *Problem Solving Handbook in Computational Biology and Bioinformatics*, chapter Practical Multiple Sequence Alignment, pages 21–44. Springer.



- Redelings, B. (2014). Erasing errors due to alignment ambiguity when estimating positive selection. *Molecular Biology and Evolution*.
- Redelings, B. and Suchard, M. (2005). Joint bayesian estimation of alignment and phylogeny. *Systematic Biology*, 54(3):401–418.
- Rivas, E. and Eddy, S. (2013). A probabilistic evolutionary model compatible with standard affine gap cost sequence alignment. In Review.
- Rivas, E., Eddy, S. R., and Haussler, D. (2008). Probabilistic phylogenetic inference with insertions and deletions. *PLoS Computational Biology*, 4(9):e1000172.
- Schwartz, A. S. and Pachter, L. (2007). Multiple alignment by sequence annealing. *Bioinformatics*, 23(2):e24–e29.
- Sela, I., Ashkenazy, H., Katoh, K., and Pupko, T. (2015). Guidance2: accurate detection of unreliable alignment regions accounting for the uncertainty of multiple parameters. *Nucleic acids research*, 43(W1):W7–W14.

Westesson, O., Lunter, G., Paten, B., and Holmes, I. (2012). Accurate reconstruction of insertion-deletion histories by statistical phylogenetics. *PLoS ONE*, 7(4):e34572.

Wheeler, T. J. and Kececioglu, J. D. (2007). Multiple alignment by aligning alignments. *Bioinformatics*, 23(13):i559–i568.

## Some of the tricks clustal uses to produce better alignments

---

- Chooses substitution matrix (PAM or BLOSUM series for amino acids) based on sequence similarity
- AA residues in a neighborhood affect gap opening penalty (easier to have gaps in hydrophilic loops)
- Gap penalties are raised if a column has no gaps, but there are gaps nearby.
- Low scoring alignments may be postponed until a later stage.

## Terminal gaps

---

Using normal gap costs causes problems if one sequence is missing the starting or ending residues:

```
Pongo      VDEFKLVIVEGELGRLFVVPTQ  
Gorilla   VD-----GELGRLFVVPTQ
```

instead of :

```
Pongo      VDEFKLVIVEGELGRLFVVPTQ  
Gorilla   -----VDGELGRLFVVPTQ
```

(Methods that utilize local alignment information are more appropriate in these cases).

Using free terminal gaps to avoid this problem, but you have to watch out for:

```
Pongo      VDEPFRFKLTNRGTSHIILVAPR  
Gorilla  -----VDEPNRGTSIILVAPR
```

Note: See Levy Karin et al. (2015) for a method of inferring parameters of an indel processes.